

LOCKERS & CUBICLES

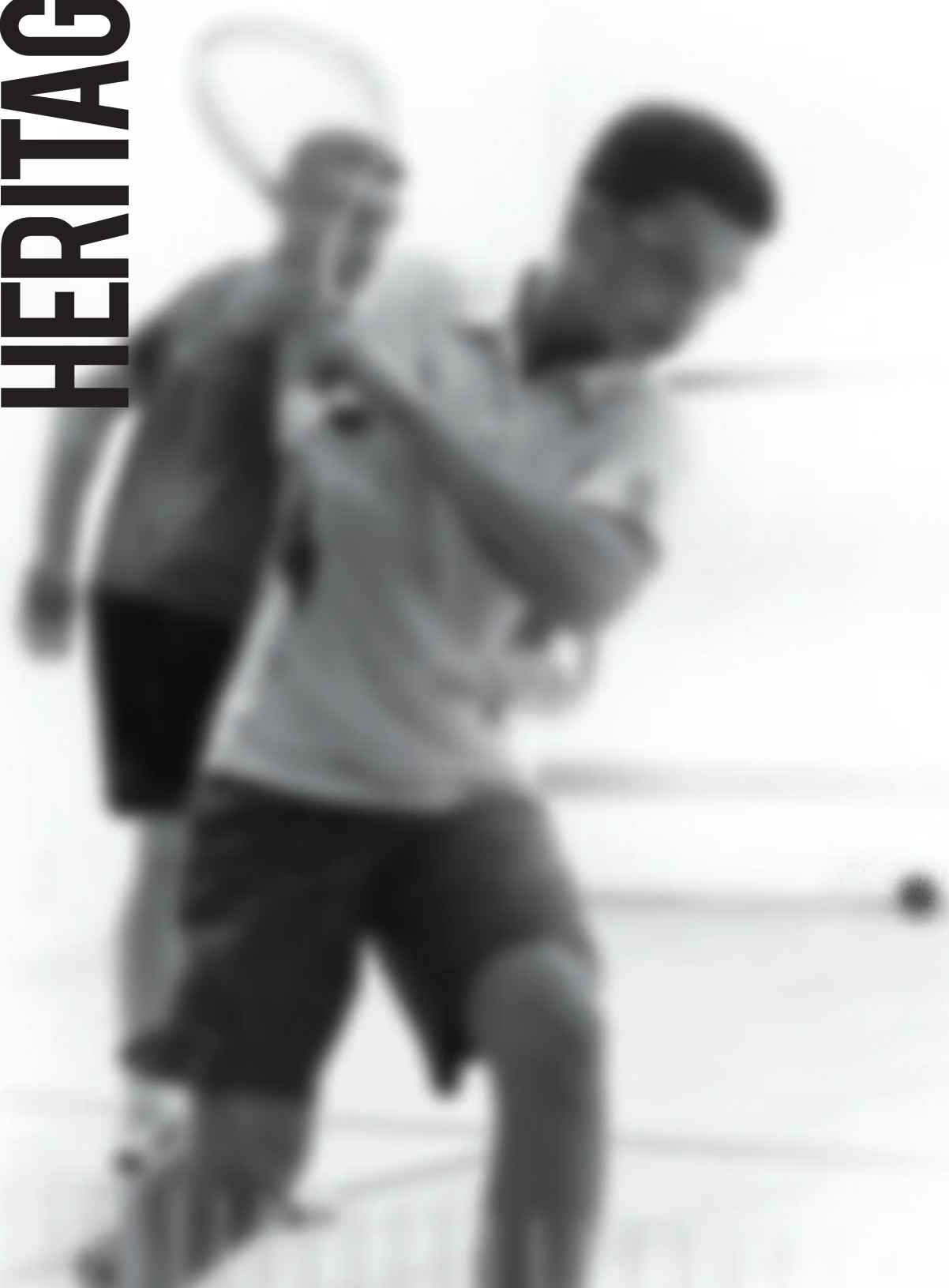






**INNOVATIVE
PROFESSIONAL
DEDICATED**

OUR HERITAGE



With origins going back over 100 years, the company was established in 1985, where its initial strategy was developing a worldwide glass wall market for the squash industry. In the late 80's Prospec expanded into cubicles and lockers, and the Marathon brand was founded. With proven brand quality and over 35 years experience in the leisure industry Prospec is considered to be the market leader in the locker and cubicle sector.

Ellis Pearson and Company
celebrating 60 successful years
in business 1913 - 1973



In 1978 Hat Glass-Pearson
Ltd was established as a
subsidiary of Hat Group Plc.



First squash court back wall
installed in early 1970's.



Hat Glass-Pearson Ltd became the
UK partner for the Swiss designed
Cabrilant cubicle system.

In 1985 Prospec was established
following a buyout by incumbent
management.



In 1989 Prospec expanded its activities
to include the Marathon range of
storage lockers and cubicles.

ACHIEVING GOALS

Specialists in lockers and cubicles, providing high quality changing, WC and shower cubicles, storage lockers and complementary products in glass and compact grade laminate.

1996 worldwide success for glass walls on squash and racquet ball courts.



Prospect



2009 Conform cubicle developed.



Lockers and cubicles for the London Olympic Aquatic Centre 2012.



2013 Prospect became part of the Abeo Group of companies.



2014 Prospect develop innovative glass product Cloud for the commercial market.



GLOBAL MARKETS



Prospect Offices:

- **Prospect Ltd**
Canklow Meadows Estate
West Bawtry Road
Rotherham, South Yorkshire
UK, S60 2XL

Tel: +44 (0)1709 377147
Fax: +44 (0)1709 375239
sales@prospec.co.uk

- **Prospect U.S. Inc**
12 Balcon Estates Drive
Saint Louis
MO 63141
USA

Tel: +1 314 485 1583
sales@prospec.us.com

- **Prospect France**
58 rue Blomet
75015 Paris
France

Tel: +34 9851 71591
sales@prospec.fr

- **Prospect Middle East Office**
Al Muraikh Tower, 3rd Floor
Old Salata
P.O. Box 5704
Doha
State of Qatar

Tel: +974 4434 0260
sales@prospec.qa

- **Prospect Far East Office**
28F Penjuru close
#01-01
Singapore
609134

Tel: +65 6777 7888
sales@prospec.sg

Prospect Partners:

- **Allied Technical Services**
Toronto Head Office
10 Thornmount Drive,
Toronto,
ON M1B 3J4
Canada

Tel: +1 416 250 5656
sales@ats-sales.ca

- **Carvart**
180 Varick St
Suite 1304
New York
NY 10014
USA

Tel: +1 212 675 003
info@carvart.com

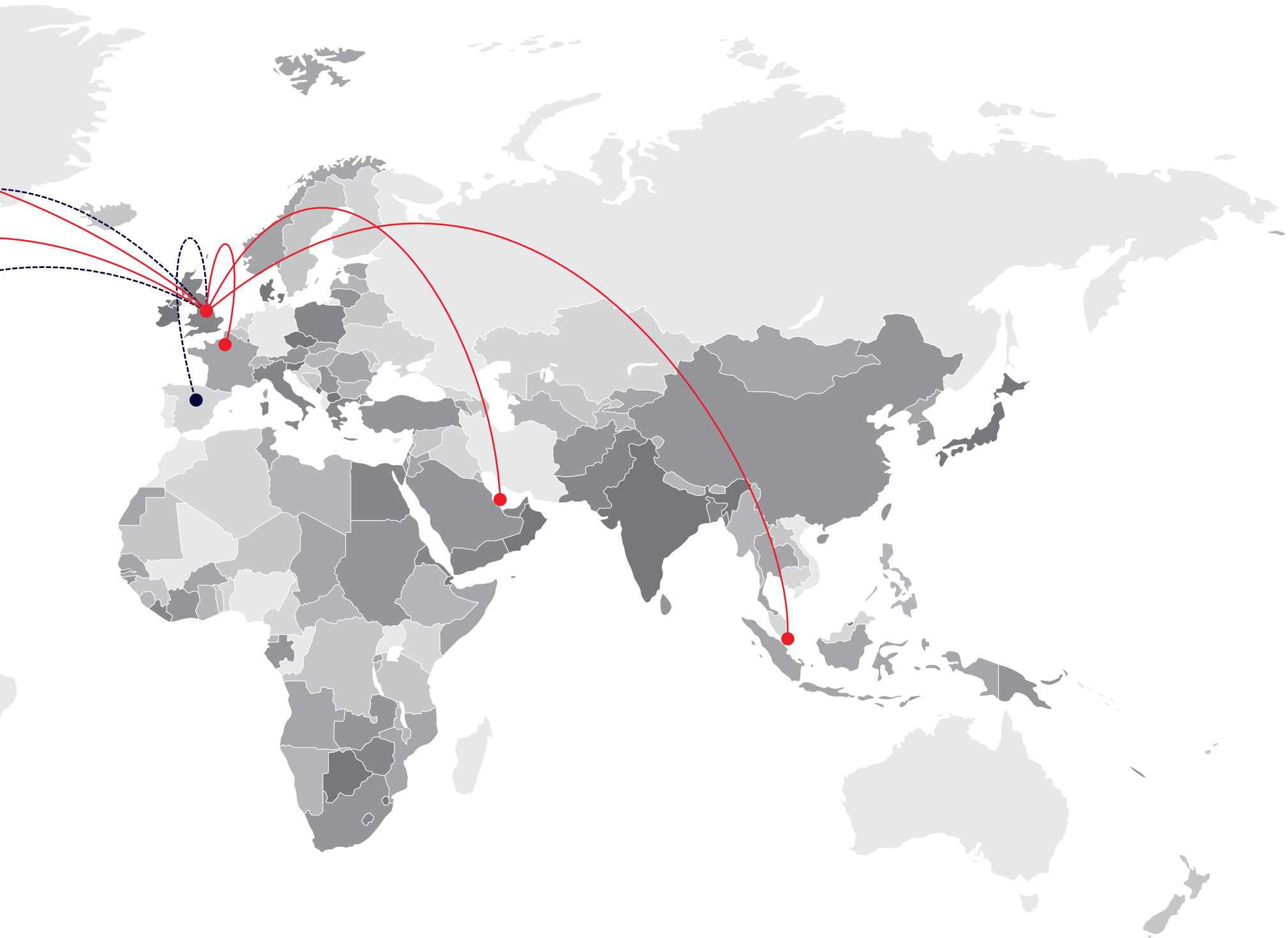
- **Thomas Wellness Group**
C. Lanzarote, 13. Nave 9.
28.703 - San Sebastián de los Reyes
Madrid
Spain

Tel: +34 9166 17607
info@thomas.es




CARVART®





LOCKERS



The Prospec range of lockers are engineered for demanding environments from public swimming pools, where resistance to vandalism, ease of maintenance and cleaning are vital, to the provision of high quality glass lockers to the health & fitness and commercial market, where design is paramount.

All lockers are available in compact grade laminate and glass to complement our cubicle ranges and associated products.

Available with unique design features compliant with the requirements of the latest DDA and building regulations.



GLASS LOCKERS wet





Description

Prospec glass lockers for use in wet areas incorporate materials that allow the striking aesthetics of glass in a pool or shower environment. With aluminium bodies, profiles plus ABS moulded plastic shelves, the lockers are specifically designed for use in wet and humid environments without the risk of degradation.

Features

- Aluminium bodies with radius back corners for ease of cleaning
- Moulded impact resistant ABS plastic shelves with ventilation to the front
- Base unit has a 3° slope to the front to facilitate drainage
- Doors from 10mm toughened float glass or 10.76 mm toughened and laminated glass
- 16 standard glass colours. Non-standard colours available on request
- Door frames from extruded anodised aluminium profiles
- Spring loaded hinges for automatic door closing
- Hinges limited to approximately 90° to prevent doors opening across adjacent lockers
- Aluminium double coat hooks fitted to all 1 and 2 tier compartments
- A wide range of locking and access systems are available providing security, cost and operational options

Product specification on page 84

LAMINATE LOCKERS wet

Description

Prospec laminate wet use lockers are designed to withstand the rigours of high use environments where the requirement for design with durability is paramount. Laminate wet use lockers are designed to last, where every element is manufactured from materials which will not degrade when exposed to chlorinated and humid atmospheres in public leisure centres, swimming pools and spas.

Features

- Aluminium bodies with radius back corners for ease of cleaning
- Moulded impact resistant ABS plastic shelves with ventilation to the front
- Option of full length angle guard security
- Doors from 10mm compact grade laminate
- Base unit has a 3° slope to the front to facilitate drainage
- Door frames from extruded aluminium profiles
- Spring loaded hinges for automatic door closing
- Hinges limited to approximately 90° to prevent the doors opening across adjacent lockers
- Aluminium double coat hooks fitted to all 1 and 2 tier compartments
- A wide range of locking and access systems are available providing security, cost and operational options



Product specification on page 84



GLASS LOCKERS dry

Description

Prospec glass lockers for use within dry environments give a contemporary look for modern changing area design.

Timber body construction with toughened glass doors provide premium quality for health and fitness facilities and memberships clubs in both the private and public sector.

Features

- Melamine faced high density particle board bodies with dowel and screw construction
- Bases, tops and shelves manufactured from the same material with 2mm PVC edging to front edges
- Doors from 10mm toughened float glass or 10.76 mm toughened and laminated glass
- 16 standard glass colours. Non-standard colours available on request
- Full width hanging rails are provided in all compartments of 900mm high or more
- Concealed door frames from extruded anodised aluminium
- Hinges limited to approximately 90° to prevent the doors opening across adjacent lockers
- A wide range of locking and access systems are available providing security, cost and operational options

Product specification on page 84





LAMINATE LOCKERS dry

Description

Prospec laminate lockers for use in dry environments incorporate timber body construction with compact grade laminate doors. Laminate doors give the lockers a robust fascia while the body provides a premium quality interior.

Features

- Melamine faced high density particle board with dowel and screw construction
- Bases, tops and shelves from the same material with 2mm PVC edgebanding to front edges
- Doors from 10mm compact grade laminate
- Full width hanging rails are provided in all compartments of 900mm high or more
- Concealed door frames from extruded aluminium
- Hinges limited to approximately 90° to prevent the doors opening across adjacent lockers
- A wide range of locking and access systems are available providing security, cost and operational options



Product specification on page 84



CUBICLES



Prospec manufacture a range of cubicles that can meet a variety of design concepts and budgets. We use our specialist glass knowledge to develop innovative glass systems, to our expertise in durable compact grade laminate. All of our cubicles are engineered for high traffic use in both wet and dry areas, for the commercial and leisure markets.

All cubicles are available in compact grade laminate and glass to complement our locker ranges and ancillary products.

Available with design features compliant with the latest DDA and building regulations, we can provide layouts and individual cubicles to meet specific job requirements.



CLOUD

Description

Cloud is a highly engineered, full height, flush fronted glass toilet cubicle system that has been developed for the commercial washroom sector. Manufactured using toughened and laminated safety glass, machined components and aluminium extrusions, we have created a toilet cubicle system that should be the centre stage of any modern commercial building development

Features

- Designed to be full height with a max floor to ceiling height of 2500mm
- Available in 16 standard colours. Non-standard colours available on request
- 15.52mm toughened and laminated glass to doors and pilasters
- Low iron opti-white glass as standard, giving a true colour representation
- Choice of anodised finishes to door furniture and extruded profiles
- Unique glass rebated feature ensuring a flush finish eliminating sight lines
- Engineered and adjustable spring loaded, self-closing hinges
- Machined lock with concealed fixings and emergency release mechanism

Product specification on page 85



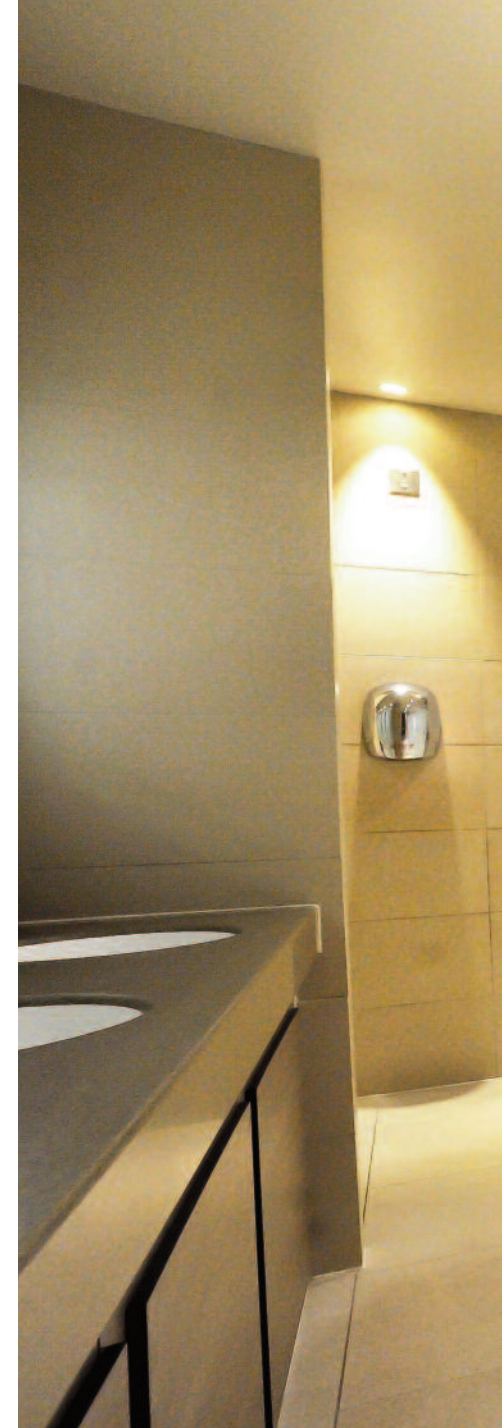
AIR

Description

Air is a modern and alternative cubicle option for both shower and toilet cubicles. Using intelligent hidden fixings, highly engineered components and the latest glass technologies, Air represents the next generation of glass cubicle systems. The unique position of both the foot and headrail ensures that all is seen is a floating wall of glass, with only the indicator plate announcing the door opening

Features

- 15.52mm toughened and laminated low iron 'Opti-White' glass doors & pilasters
- Choice of 12.76 toughened and laminated glass or compact grade laminate partitions
- Concealed fixings to doors and pilaster panels
- Support legs and stabilising bar are attached to the partition panel giving a floating appearance
- Engineered to disperse stress with emphasis on the method of attaching the friction fit components to the glass, combined with high strength adhesives
- Anodised aluminium finished fittings for use in wet areas
- Door lock with oval shaped indicator plate, with integral emergency release function
- Available in 16 standard colours. Non-standard colours available on request



Product specification on page 85



CABRILLANT

Description

Cabrillant is the original glass panel cubicle system developed in Switzerland over 30 years ago, with continual improvement and development, it proves to be the choice of many health and fitness clubs

Cabrillant fits perfectly into public leisure centres, private health clubs and commercial developments for a high end look. It is the universal patch fitted, unframed glass cubicle. The option of toughened and laminated safety glass enables poolside use

Features

- Panels from 10mm toughened float glass or 10.76 mm toughened and laminated glass
- Support legs for the 600 system are attached to the front pilaster, while the support legs for the 700 system are attached to the partition panel giving a floating appearance
- The Cabrillant frameless system is engineered to disperse stress with emphasis on the method of attaching the friction fit components to the glass, combined with high strength adhesives
- The 25 micron thickness anodised aluminium finish is ideal for use in wet areas
- Cubicles without doors have a small front pilaster to protect the divider panels and are available with PVC anti bacterial curtains
- Available in 16 standard colours. Non-standard colours available on request.

Product specification on page 85 & 86





CONFORM

Description

Conform was developed for the London 2012 Olympic pool and is now an established product within the Prospec cubicle range. Conform is designed to give a smart, sleek, floating front appearance with the clever position of the foot, yet is still fully framed.

The Conform system has been engineered to provide a freestanding island cubicle construction where cubicles are subject to frequent and heavy use, commonly found in public swimming pool environments

Features

- The support feet are set back on the division panel, connected to the front framework to maintain conformity to NBS K32/112A panel cubicles fully framed
- Designed to cope with all reasonable falls in floor level
- Available with anti-finger and anti-nip detail.
- Concealed fixings
- The sprung nylon hinges are adjustable to open in or out
- Breakout strip for emergency cubicle entry
- Available as an elevated system

Product specification on page 86





CLASSIC

Description

Classic is our original fully framed cubicle system, which has been developed and improved over many years. Specifically designed for high traffic public areas. Classic combines style with quality engineering. The use of compact grade laminate gives the system the durability to withstand heavy use in wet environments

Features

- Fully framed aluminium cubicle system
- 49mm x 99mm radiused head rail, mechanically connected to 50mm diameter vertical posts, with screwport connections to form a structural framework
- Head section connected at 90° junctions
- Tamperproof design, no exposed mechanical fixings
- Door frame with 'safe edge' anti-finger trap details
- Vertical posts are connected to the floor by adjustable legs
- Full length channels are used to attach partition and pilaster panels to walls
- Pilaster panels secured into frame with anti-fungal silicone adhesive
- Standard handle assembly with powder coated aluminium coverplate, internal door knob/buffer, plain cover rosette to the exterior through bolt and screw construction

Product specification on page 86





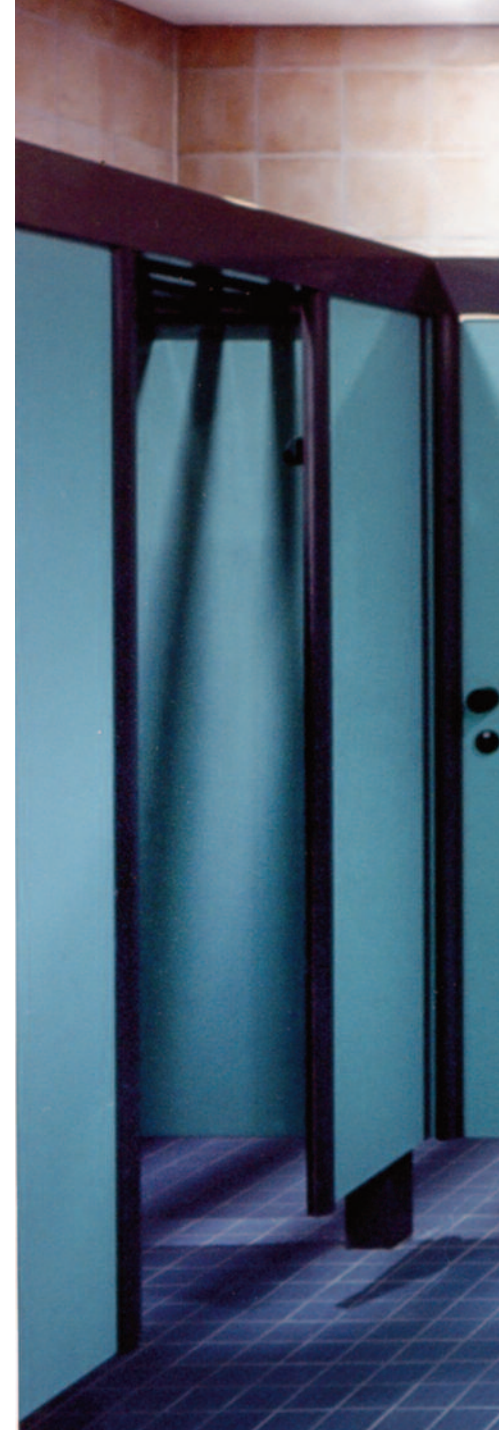
SUSPENDED

Description

Suspended has specially engineered design flexibility that enables it to be installed in almost any project. With a load bearing head beam the system is designed for high use washroom and changing areas in demanding public environments and can incorporate both the Classic and Conform systems

Features

- Option of a fully suspended system supported by connections to structural slab or walls above suspended ceiling
- The extruded aluminium hollow head section is capable of spans up to 6 metres of single depth wall mounted cubicles
- Vertical posts are mechanically joined to the head beam with screwport and through bolt connections to form a structural framework including capped ends
- Full length channels are used to attach partition and pilaster to walls
- Engineered to be used in double or single island configuration or wall mounted
- Suspended can be used in free standing block, between walls or with wall mounted supports concealed within the ceiling void
- Design flexibility enables it to be installed in almost any project, even with large ceiling voids, unlike traditional ceiling hung systems



Product specification on page 87



SYSTEM D

Description

System D is a streamlined system with a curved appearance. The use of an elliptical aluminium pilaster provides a unique and modern finish. System D is suitable for both wet and dry use and is available in glass, laminate or a mixture of both, giving complete design and colour flexibility

Features

- Clean curved appearance of anodised aluminium extruded elliptical front profiles and headrail
- The extruded aluminium 100mm x 28mm elliptical headrail is mechanically joined to elliptical aluminium pilaster profiles with screwport connections to form a structural framework
- Panels and doors in 12mm compact grade laminate, 10mm toughened glass or 10.76 toughened and laminated glass
- Suitable for wet and dry use
- Partition panels supported on adjustable legs, mechanically connected to the front pilasters to create a fully framed system
- Full length channels are used to attach partition and pilaster panels to walls

Product specification on page 87





CONNECT

Description

Connect is an elemental system suitable for toilets and showers within leisure and general commercial applications that do not experience a high volume of use

Connects style is its simplicity

Features


- Unframed cubicle system using compact grade laminate
- All edges are polished with radiused corners, for safety
- Soft close aluminium hinges allow doors to fall close quietly, through fixed for added strength.
- Expanding metal inserts are used to accept all hinges
- Through fixed aluminium rotary door lock with no visible fixings and emergency release.
- Adjustable aluminium pedestal using unique clamping system
- Fully extruded aluminium wall channel to rear of each division panel
- Fully extruded aluminium headrail, with no visible fixings for added strength
- Overlap door/panel detail to avoid finger traps

Product specification on page 87





COMPLEMENTARY PRODUCTS



Prospec offer a range of products to perfectly complement our locker and cubicle ranges, providing a complete one stop shop solution.

Trojan vanity units and duct panels plus our range of bench seats are available in a range of styles and materials to provide the finishing touches to your project.

Available with design features compliant with the requirements of the latest DDA and building regulations.



TROJAN VANITY UNIT

Description

Trojan vanity units are designed for long term, low maintenance use.

From premium solid surfacing and troughs, to durable and functional laminate, Prospec offer a vanity unit to accommodate all design requirements and budgets.

Features

- Available as full vanity units with under frames and panels, suspended units for semi recessed bowls or as narrower vanity grooming shelves
- Compact grade core laminate: 0.8mm high pressure laminate bonded to 12mm core laminate. Not suitable for under mounted bowls
- Solid surfacing materials: Designed for long term, low maintenance use. Solid colour throughout its thickness, virtually seamless joints and is water and mark resistant. A choice of inlays, colour bands and patterns available
- Composite materials: High pressure laminate bonded to moisture resistant MDF or WPB plywood with post-formed integral upstand, front downstand, fascia ends where visible to be blocked and laminate finish

Product specification on page 88





TROJAN

Description

Designed to withstand wet use, Trojan access panel system has been developed to eliminate the requirement of a first fix, allowing framework and panels to be installed at the same time.

Trojan panels are available in compact grade laminate or for a more contemporary finish, glass and veneer.

Features

- Pre-fabricated modular access panel system
- Full extruded aluminium framework
- Lightweight, durable and recyclable
- Framework will not break down if exposed to moisture
- Panels are manufactured from compact grade laminate
- Anti-tamperproof lift off panels
- Panels can be manufactured in glass and veneer to complement our range of glass cubicles
- The system is compatible with most sanitaryware manufacturers pre-plumbed cisterns

Product specification on page 88



BENCHES

Description

Prospec bench seating is engineered to meet the requirements of high volume changing areas. Available in compact grade laminate for wet & humid areas or solid hardwood and upholstered in a range of materials for dry change areas.

Features

- Mild steel welded box sections, bright zinc plated with polyester powder coating finish
- Brackets available in multiple, wall, floor and island configurations
- Adjustable feet to accommodate sloping floors
- Direct to floor with insitu brackets and stainless steel screws
- Island frames and floor mounted can be freestanding
- Nylon moulded or satin anodised aluminium coat hooks.
- Compact grade laminate slats, through fixed with coach headed bolts and nyloc nuts
- Postformed slats from HPL on compact grade laminate
- Hardwood timber slats secret fixed with stainless steel wood screws
- All seat types are compatible with the Prospec cubicle ranges

Prospec GRP Seating:

- Unique, flexible, modern modular design
- Tough and hard wearing - will stand up to the rigours of heavy everyday use
- Weather proof for indoor or outdoor use in domestic and public places
- Any BS/RAL colour

Product specification on page 88 & 89





SQUASH

Ellis Pearson Glasswalls

Ellis Pearson is the world's leading name for squash and racket court glasswalls. In 1969 Ellis Pearson developed and installed the first glass backwall in the world at Abbeydale squash club in Sheffield. Since then many thousands have been installed throughout the world.

Ellis Pearson glasswalls were the first to meet the International Squash Rackets Federation specification, now known as the World Squash Federation.

Ellis Pearson glasswalls can also be made to suit bespoke situations where non-standard sizes are required. The design would be based on the freestanding or Clubwall alternative.

The range also offers glass doors to fit into existing courts.



SQUASH

Ellis Pearson Glasswalls

Description

The Ellis Pearson glasswall range offers a choice of standard back walls in freestanding or fixed-head configurations. The most popular and practical choice being the type 200, a 4 panel freestanding type, with full height door and support fins. Overall size 6400mm wide x 2130mm high.

The 'Clubwall' is a fixed-head alternative to the standard freestanding back walls, and has been developed specifically for courts with structural lintels above the glasswall. Clubwalls are supported by aluminium posts (80mm x 40mm), rather than glass fins, which also makes them suitable for use in narrow corridors.

Ellis Pearson glasswalls can also be made to suit bespoke situations where non-standard sizes are required. The design would be based on the freestanding or Clubwall alternative.

Features

- Constructed from 12mm toughened glass, edgeworked and drilled as necessary.
- Manifestation to the lower 610mm of all panels and doors with 3mm wide white lines screen painted on the playing side
- All components and high-tensile nylon patch fittings included
- Flush ring-pull handle and latch set;
- Powder coated aluminium posts on the 'Clubwall'
- Aluminium brackets for the supporting glass fins on the 'Freestanding' design
- Ellis Pearson glasswalls meet World Squash Federation specification
- Exhaustively tested by leading independent authorities
- Ellis Pearson glasswall system meets all recommended safety standards
- Approved by England Squash & Racketball





MAINTENANCE

Prospec's maintenance department has a dedicated team of technicians that provide on site repairs. We offer a maintenance agreement where we will visit a site for a specified number of times during the year. Alternatively we offer a one off service visit.

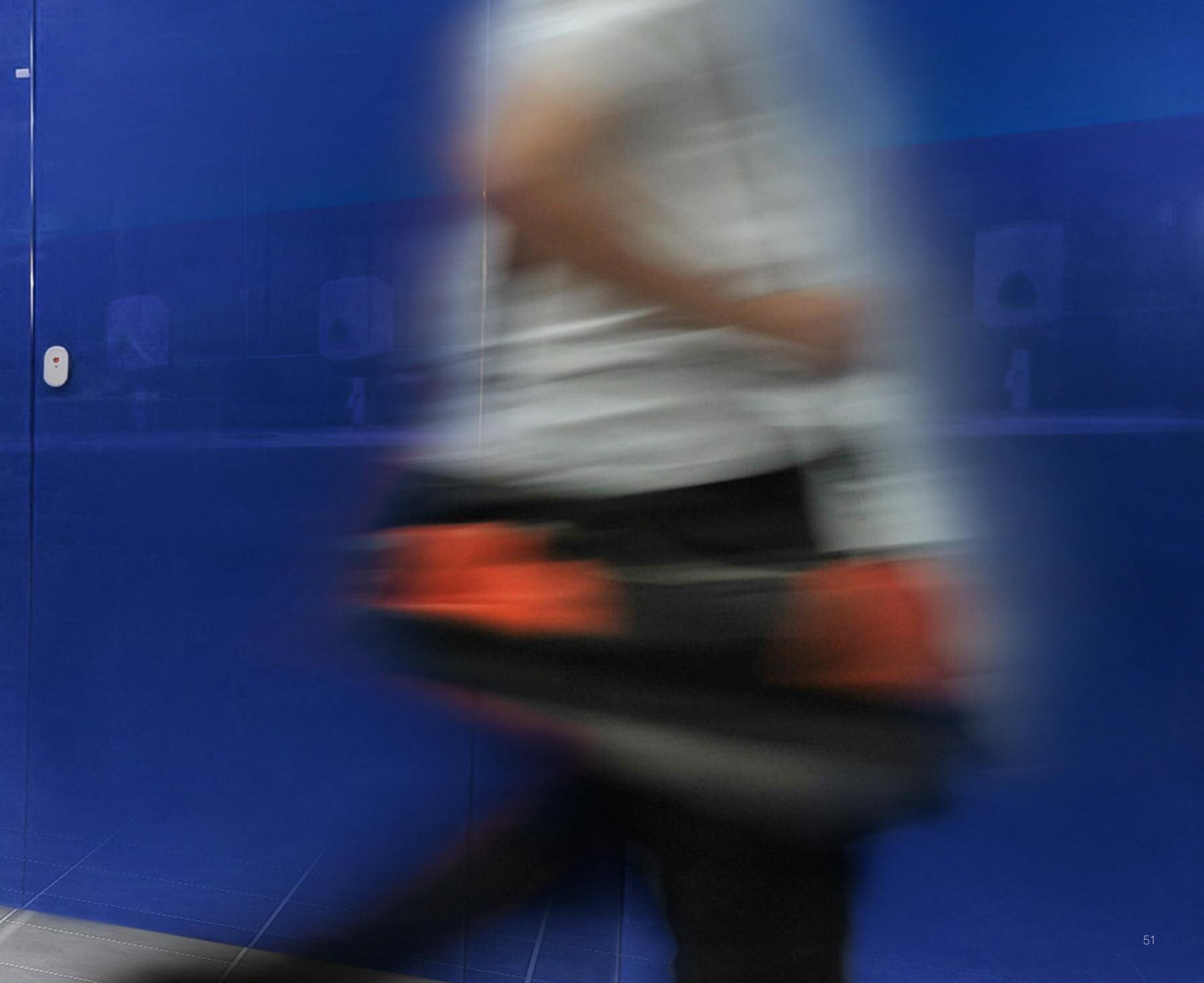
A maintenance service visit will include the checking of all locker and cubicle components to ensure that all fittings are in place and secure, any adjustments will be made where necessary. All lock cylinders will be lubricated and each mechanism will be checked with a coin to ensure that it functions satisfactorily. Should there be any broken (snapped) keys in the cylinders these will be removed and the cylinder will be checked with the masterkey to ensure that it is not damaged.

A list of any missing components will be compiled along with any necessary information required e.g barrel codes

where keys are missing and a parts quotation will be issued following the service visit. Locker and cubicle doors will be checked for alignment and adjusted where necessary.

Prospec's maintenance department can train centre staff in routine locker and cubicle maintenance ensuring that the centre is equipped with all of the necessary tools and they are familiar with their purpose. Similarly they will be shown how to use masterkeys, obtain barrel codes to order replacement keys and be shown how to gain access to a locker in the rare event that the lock jams and the locker is in a locked position.

Prospec's maintenance department are happy to provide you with a quotation for any replacement parts required or provide you with details of our annual maintenance agreement and information on our current prices. We also have an online spares shop which can be visited at www.prospec.co.uk



MAINTENANCE

Description

The Prospec maintenance package is available to guarantee your changing facilities remain fully functional at all times, ensuring that you deliver first class standards to your customers.

Key Benefits

- Our 12-month maintenance package includes a minimum of 2 annual service visits.
- Full assessments are carried out by trained operatives.

Service includes the following: -

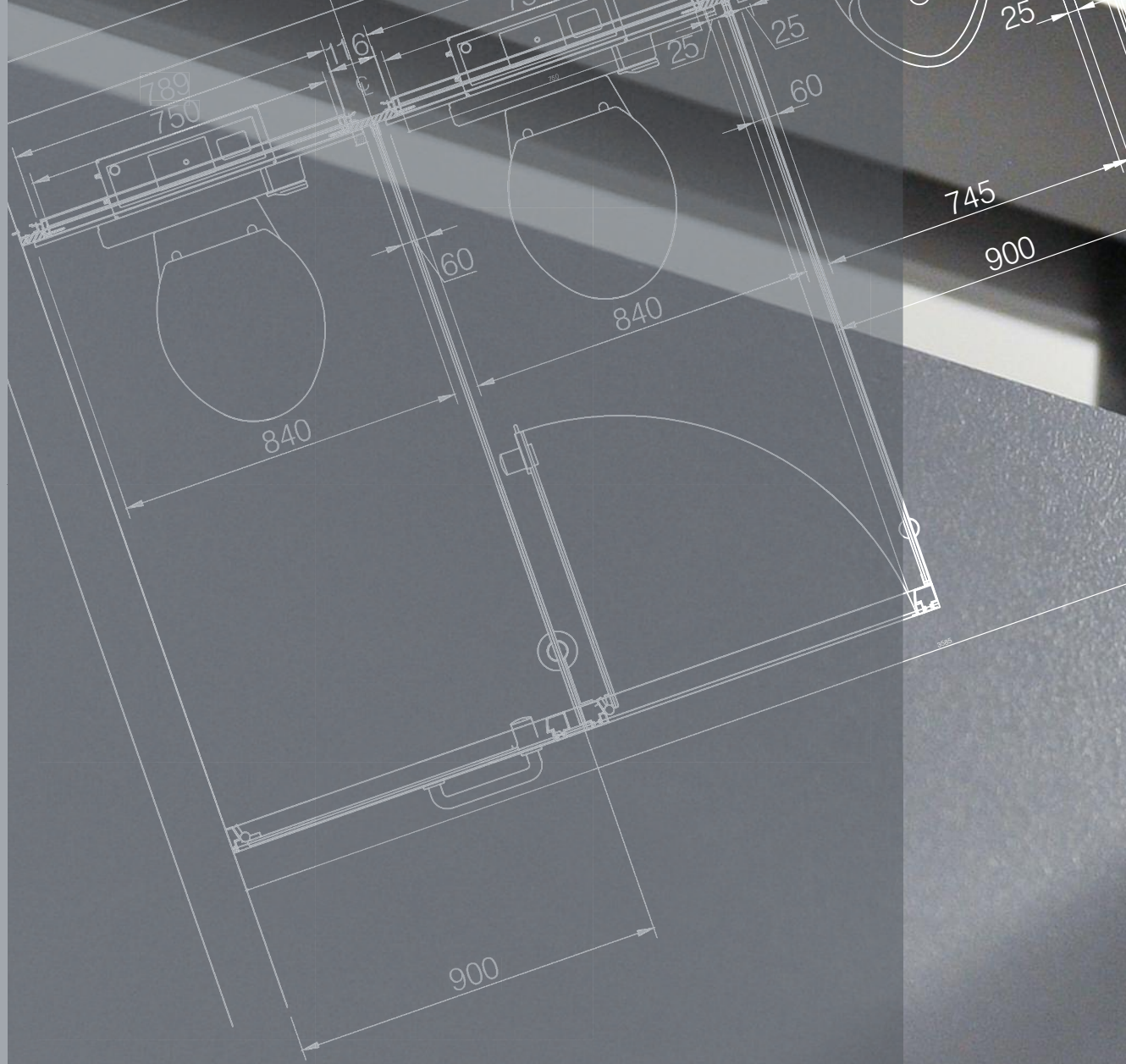
- Lubrication of all lock cylinders
- Check all locks are in working order and carry out any adjustments or repairs necessary
- Tighten all locker hinge screws
- Realignment of locker doors
- General repair of hinges, handles and bench seating to cubicles
- Replace any chargeable fittings, as identified and agreed during the initial assessment.
- Maintenance package includes all labour costs

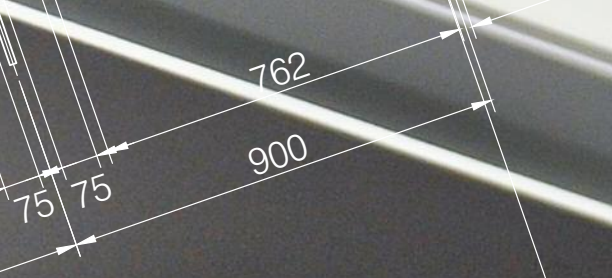




TECHNICAL

Information

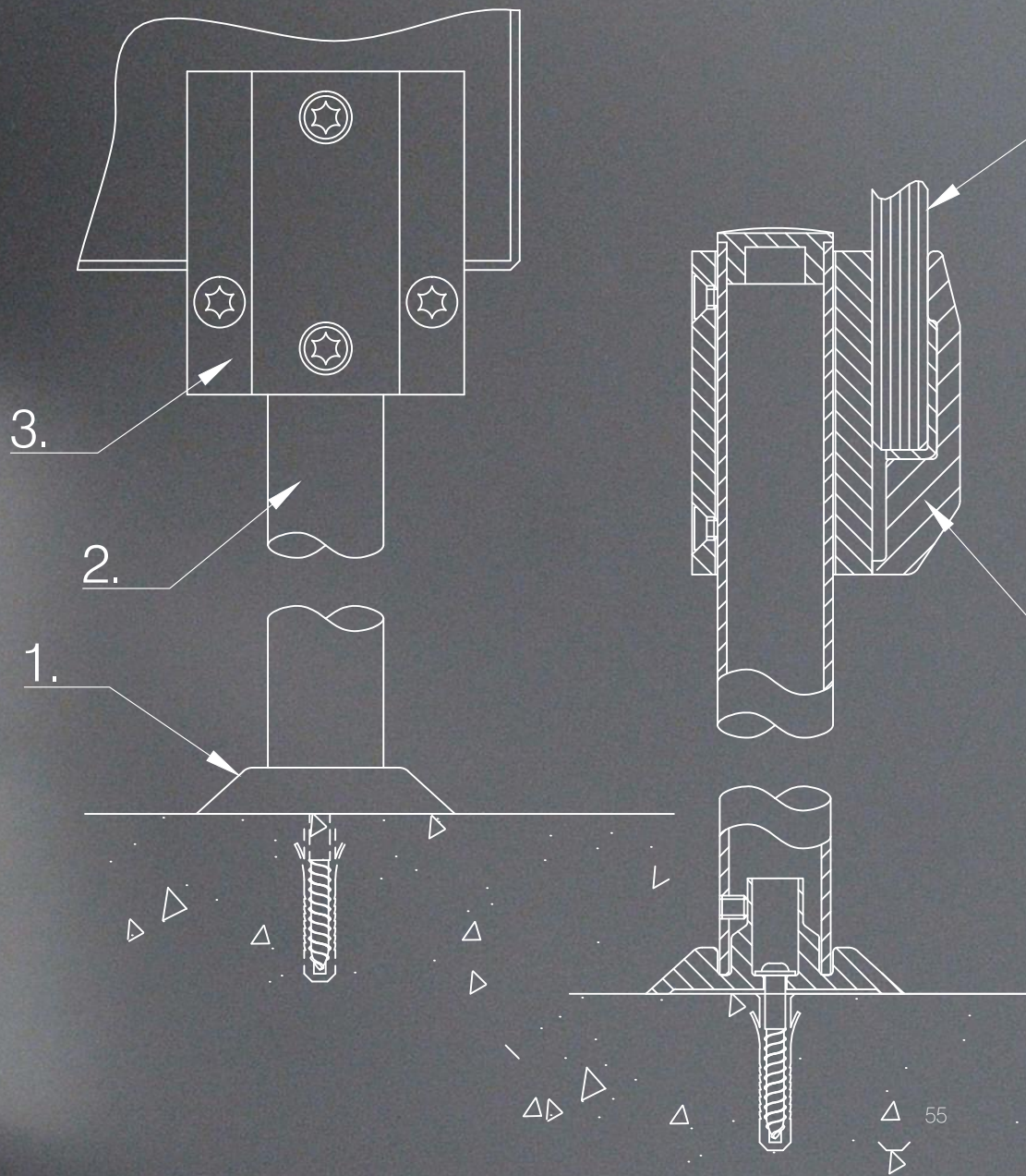




Plan



Internal Foot Detail



Lock Descriptions

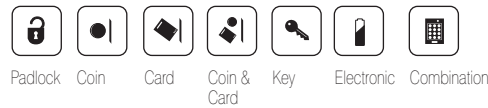
Cost Categories



Suitability



Operation Categories



- 1 **Low Level.** Low resistance to attempted break-in with basic equipment. Not suitable for public facilities. Any lock system fixed direct to the back of locker doors is in this category. The resistance being reliant on the pull out strength of the screws.
- 2 **Medium Level.** Has some resistance to attacks from casual thieves. Only suitable for installations with constant staff supervision.
- 3 **Medium to High Level.** Resistant to attacks from experienced thieves. Suitable for use in both private and public facilities with reasonable levels of supervision.
- 4 **High Level.** Specification including addition of continuous angle guards and anti-tamper fixing screws. Resistant to determined attacks from experienced thieves with specialist equipment. Suitable for installations with limited staff supervision and or lockers in remote locations. Highly recommended when the facility has a previous history of theft.

Prospec can provide the highest level of security available in the industry. It should be noted that the items supplied are storage lockers, not safes and as such there can be no absolute guarantee of resistance to determined thieves who are becoming increasingly ingenious in their methods.



Prospect Removable Cylinder Coin Lock

Prospect Removable Cylinder Coin Lock with coin refund, (also available with card system) removable nickel-plated brass cylinder, drilled security key, master series with 2,000 differs. Fixed to backplate with 4no anti tamper torx screws. Attached to the door and aluminium numberplate by 316 grade stainless steel through fixings.

Supplied with 1no user key per lock, 2no master keys and 2no cylinder removal key per installation.

Cards can be supplied by Client or Prospect. Hole punch available to allow cards to be made on site.



Prospect Removable Cylinder Single Coin Collect Lock

Prospect Removable Cylinder Coin Collect Lock with coin retain function, coin box with separate master key, removable nickel plated brass cylinder, drilled security key, master series with 2,000 differs. COIN BOX fixed to backplate with 4no anti tamper torx screws. Attached to the door and aluminium numberplate by 316 grade stainless steel through fixings.

Supplied with 1no user key per lock, 2no master keys, 2no cylinder removal key and 2no coin box master keys per installation.

Coin Box Options:
Integral capacity 8 coins.
Additional, capacity 50 coins.
Additional, capacity 100 coins.



Prospect Removable Cylinder Dual Coin Collect Lock

Prospect Removable Cylinder Dual Coin Collect Lock with coin retain function, either coin retained, coin box with separate master key, removable nickel plated brass cylinder, drilled security key, master series with 2,000 differs. Fixed to backplate with 4no anti tamper torx screws. Attached to the door and aluminium numberplate by 316 grade stainless steel through fixings. COIN BOX fixed to the door on aluminium number / backplate by 316 grade stainless steel through fixings.

Supplied with 1no user key per lock, 2no master keys, 2no cylinder removal key and 2no coin box master keys per installation.

Coin Box Options:
Integral capacity 8 coins.
Additional, capacity 50 coins.
Additional, capacity 100 coins



Locking SYSTEMS

LOCKING Systems



Prospec / Kaba Removable Cylinder Coin Lock with Coin Refund

Prospec / Kaba Removable Cylinder Coin Lock with Coin Refund, removable KABA cylinder, drilled security key, unique master series with 100,000 differs, fixed to backplate with 4no anti tamper torx screws. Attached to the door and aluminium numberplate by 316 grade stainless steel through fixings.

Supplied with 1no user key per lock and 2no cylinder removal key per order.



Prospec / Kaba Removable Cylinder Coin Collect Lock with Coin Retain

Prospec / Kaba Removable Cylinder Coin Collect Lock with Coin Retain function, removable KABA cylinder, drilled security key, unique master series with 100,000 differs, fixed to backplate with 4no anti tamper torx screws. Coin box with separate master key. Attached to the door on aluminium numberplate by 316 grade stainless steel through fixings.

Supplied with 1no user key per lock, 2no master keys, 2no cylinder removal key and 2no coin box master keys per installation.

Coin Box Options:
Integral capacity 8 coins.
Additional, capacity 50 coins.
Additional, capacity 100 coins.



Aluminium Hasp & Clasp

Aluminium Hasp and Clasp from machined aluminium engaged into grooves in the doorframe profile, clasp is formed by machined hole in the door and aluminium numberplate attached to the door by 316 grade stainless steel through fixing into satin anodised aluminium doorknob.

Padlock can be supplied by Client or Prospec.





Hasp/Camlock

Body chrome plated steel. Anti-rotation device, aluminium numberplate attached to the door by 316 grade stainless steel through fixing into satin anodised aluminium doorknob.

Padlock can be supplied by Client or Prospec.



Dry Area Camlock

Standard Camlock, nickel plated with 10 wafer cylinder, reversible toothed key, master key series with 4000 differs. Attached to the door on aluminium back plate using through fixings.

Supplied with 1No user key per lock and 2No master keys per installation.



Wet Area Camlock

Standard Camlock from solid brass, nickel-plated cam lock with 6-pin cylinder, drilled security key, master key series with 1600 differs. Attached to the door on aluminium number / backplate by 316 grade stainless steel through fixings.

Supplied with 1no user key per lock and 2no master keys per installation.



Locking SYSTEMS

LOCKING Systems



Prospec Mechanical Code Lock

Combination lock for lockers equipped with 4 dials that allows the choice of a 4-digit numerical code by the user. Fixed combination or reset use. Attached to the door on a backplate using through fixings.



Prospec OTS

Transponder operated stand-alone lock, powered by 4 AA batteries with 30,000 cycle's battery life.

- Resistance to Humidity IP55.
- Compatible with Technogym wellness system, other wellness cashless purchasing & access control systems.
- 2 level master key system.
- Operates on Mifare 1k & 4K technology.
- Lock, strap & card programmer.

Accessories

- Infoterminal - Showing locker number or individual straps and cards.
- Strap Return Unit.



Prospec OTS Advanced

Transponder operated stand-alone locks, powered by 4 AA batteries with 30,000 cycle's battery life.

- Resistance to Humidity IP55.
- Compatible with Technogym wellness system, other wellness cashless purchasing & access control systems.
- 2 level master key system.
- Operates on all Mifare technology.
- Real time functionality.
- Option of dedicated user use.
- Auto opening function.
- Events log.
- LED indicated lock status.
- PC Software.
- NFC Programmer.
- CN reader.

Accessories

- Infoterminal - Showing locker number or individual straps and cards.
- Strap Return Unit.





Prospec OCS

Battery operated standalone electronic digital lock with 4-digit user selected code input, master key, management key and disabled user key option. LED indicators for lock/unlock and low battery warning, 4 AA size batteries, 10,000 cycles, deadbolt locking for security, fixed through the door with steel screws.

- Can be assigned for private clubs or shared use for public buildings.
- Keypad.

Options:

Separate numberplate.

Engraved numerals on laminate doors.



Prospec Keystraps

Moulded from flexible PVC, 316 grade stainless steel buckles, with black numerals, for all cam and coin locks.

Colour: Blue / Green / Red / Yellow / Orange / Grey / White.

Numbering sequence to order.



Numbered Discs / Safety Pin

25mm Diameter White Trafolyte disc with black engraved numerals.

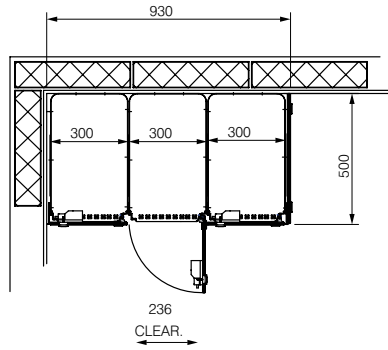
Numbering sequence to order.

Locking SYSTEMS

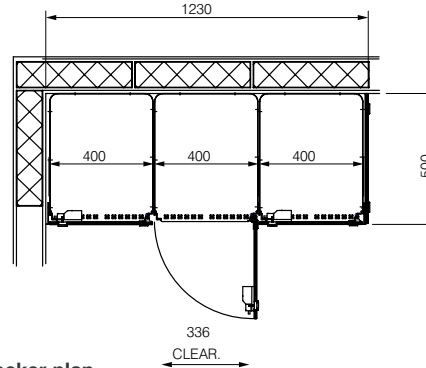
LOCKER

Systems

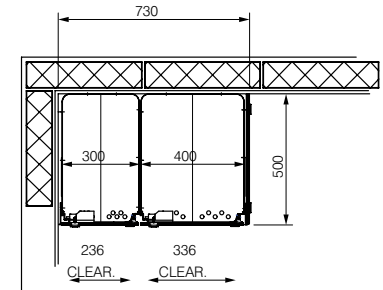
Locker Configuration



Locker plan

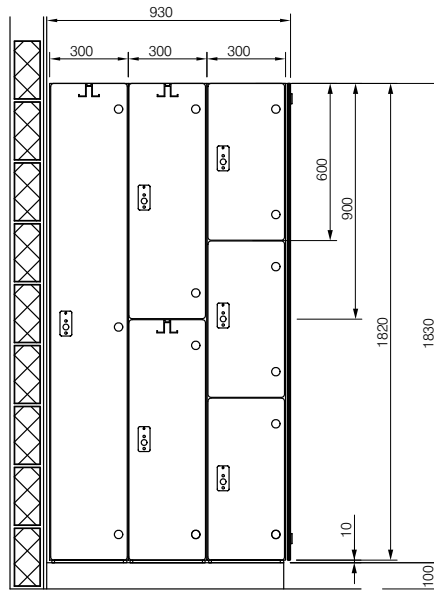


Locker plan



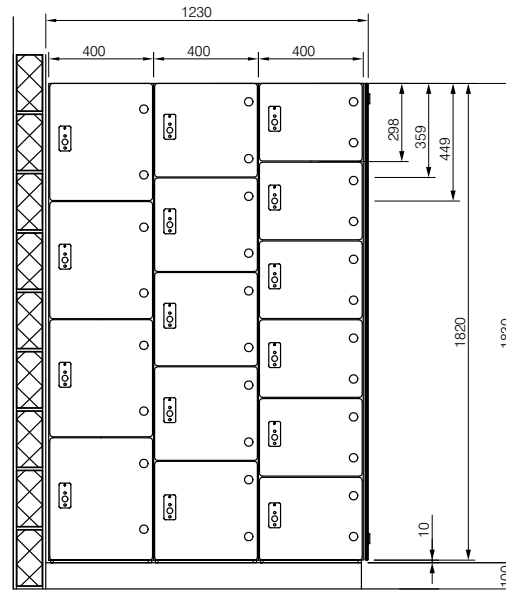
Locker plan

Clear opening size for a 300mm & 400mm wide 'Z' locker.



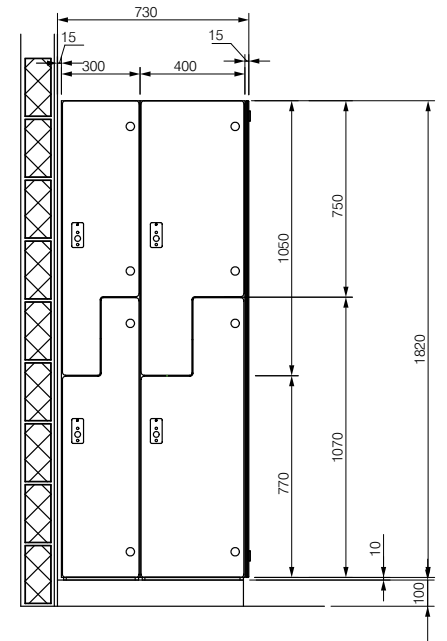
Generic locker front elevation.

300mm wide (various tierage).



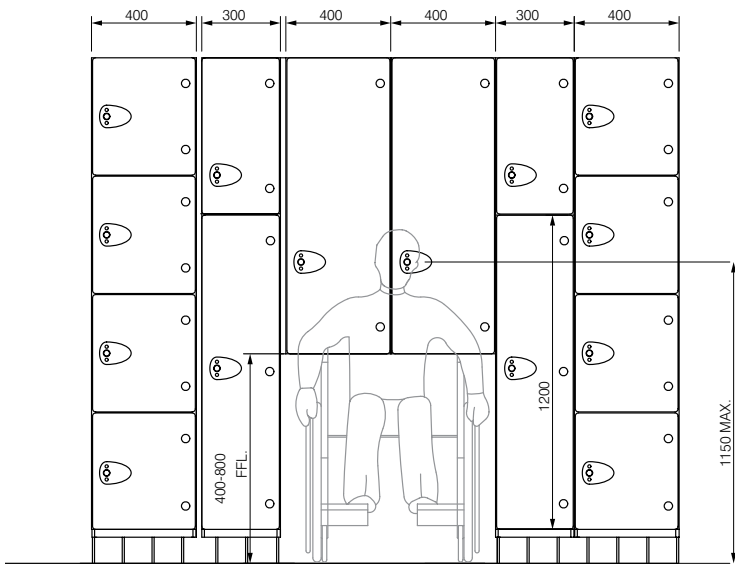
Generic locker front elevation.

400mm wide (various tierage).

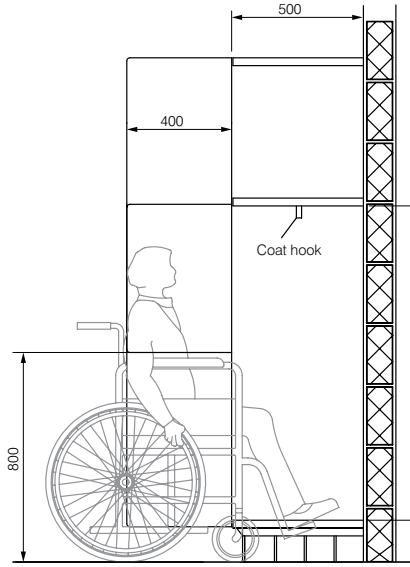


Generic 'Z' locker front elevation.

300mm & 300MM wide.

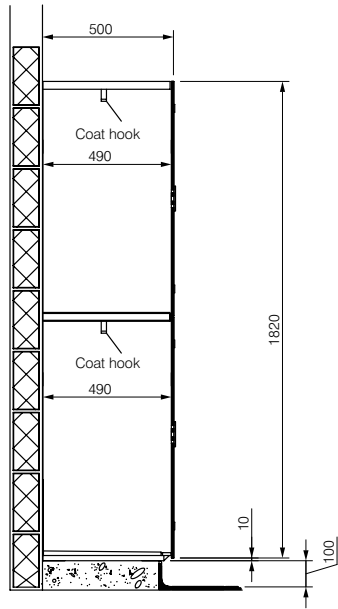


Accessible lockers elevation

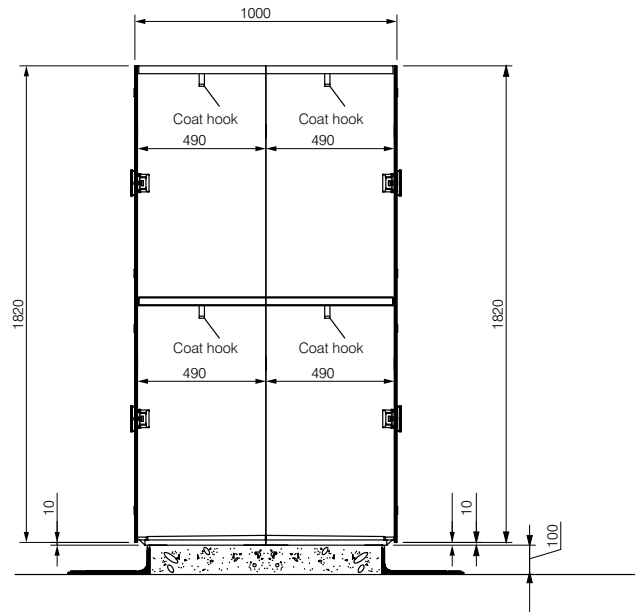


Typical section

Accessible lockers section



Generic locker side elevation



Back to back lockers side elevation

LOCKER

Systems

LOCKER Systems

Locker Volume M³

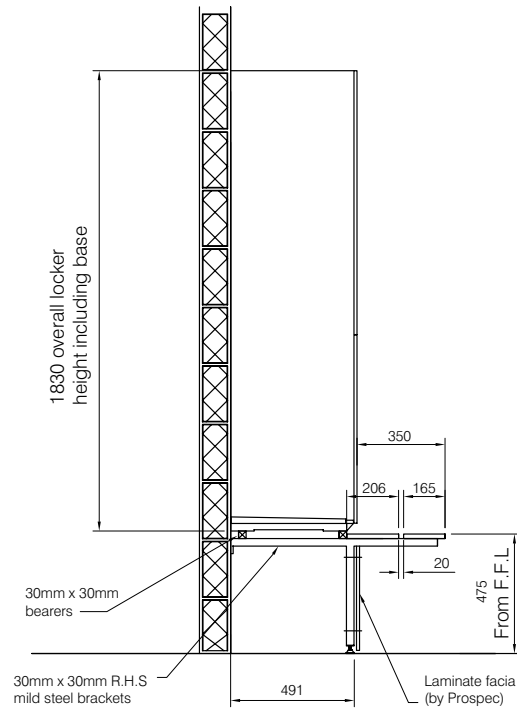
Locker 300mm Wide X 500mm Deep Capacity (Approx) M³

	Height	Height	Height	Height	Height	Height
Tierage	900	1000	1200	1500	1800	2000
1	0.1350	0.1500	0.1800	0.2250	0.2700	0.3000
2		0.0750	0.0900	0.1125	0.1350	0.1500
3			0.0600	0.0750	0.1350	0.0990
4			0.0450	0.0563	0.0675	0.0750
5				0.0450	0.0540	0.0600
6					0.0450	0.0499

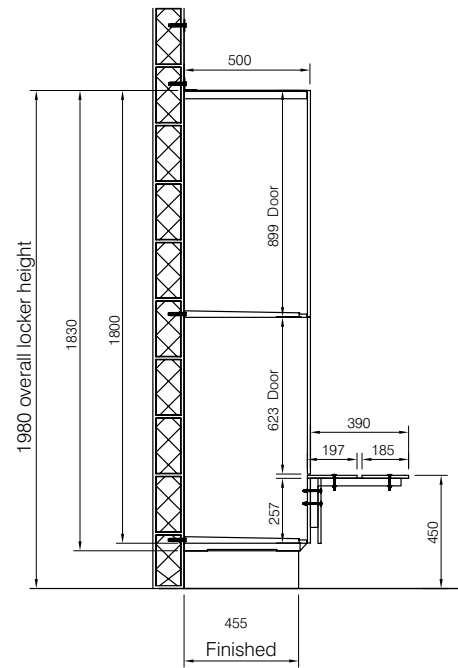
Locker 400mm Wide X 500mm Deep Capacity (Approx) M³

	Height	Height	Height	Height	Height	Height
Tierage	900	1000	1200	1500	1800	2000
1	0.1800	0.2000	0.2400	0.3000	0.3600	0.4000
2		0.1000	0.1200	0.1500	0.1800	0.2000
3			0.0800	0.1000	0.1200	0.1300
4			0.0600	0.0750	0.0900	0.1000
5				0.0600	0.0720	0.0800
6					0.0600	0.0666

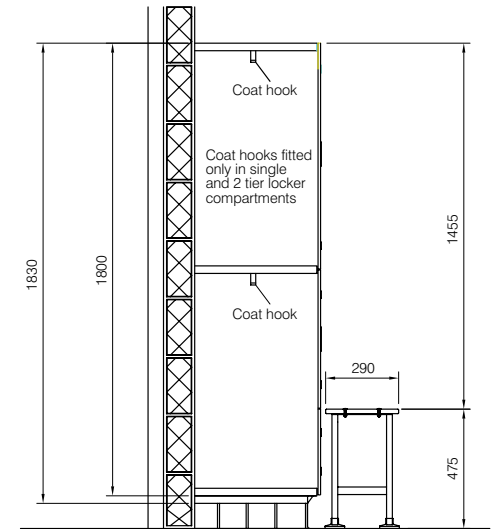
Locker Setting Out.



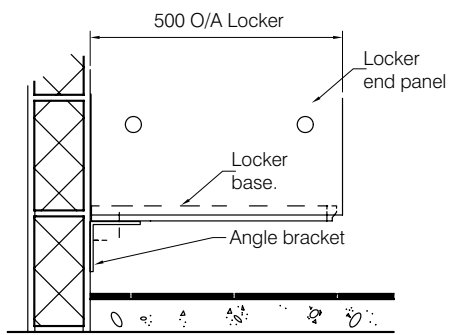
Section detail locker support bench seating



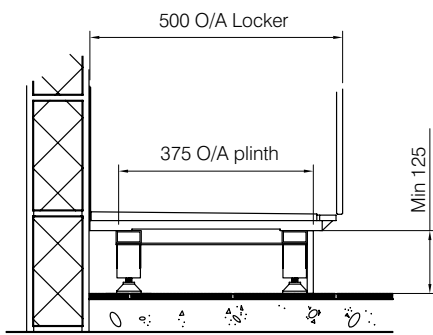
Section detail welded locker with cantilevered bench



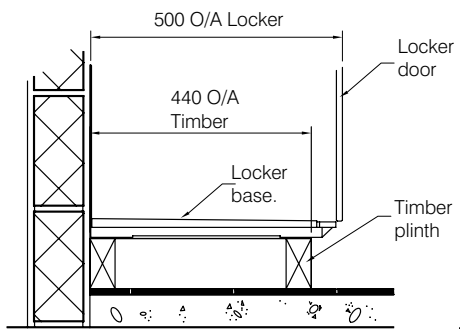
Section detail welded locker with floor mounted bench



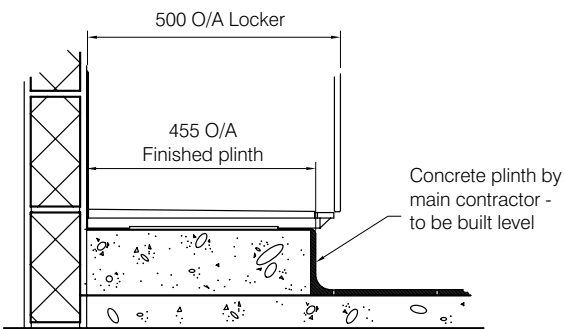
Angle bracket option



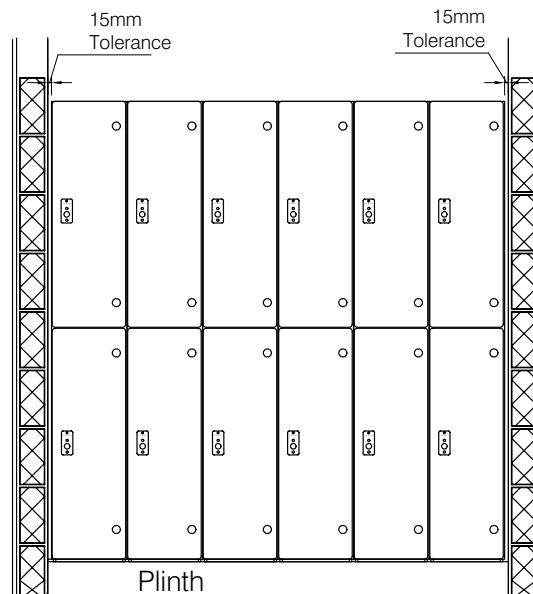
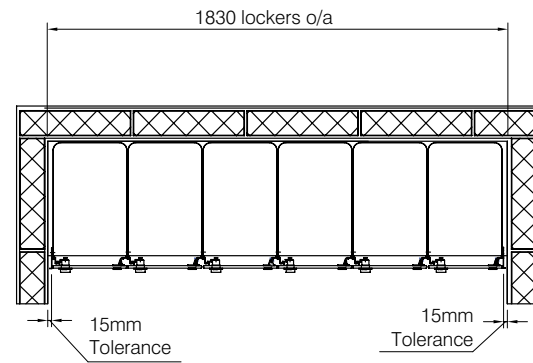
Aluminium frame plinth option



Timber plinth option



Concrete plinth option

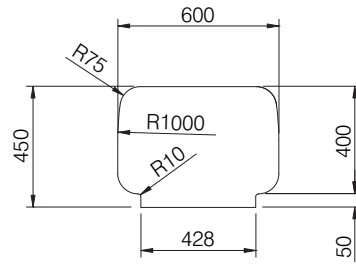
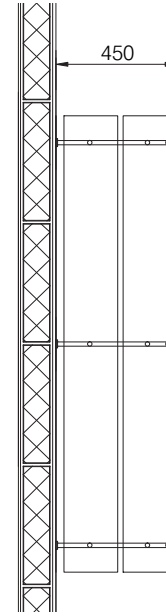
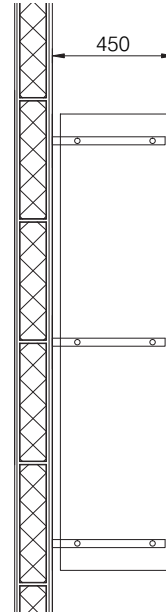
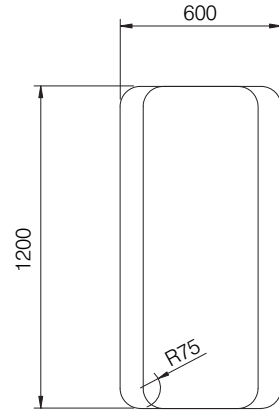


Locker tolerance between walls

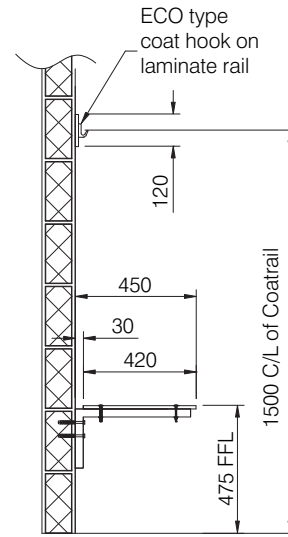
LOCKER Systems

SEATING

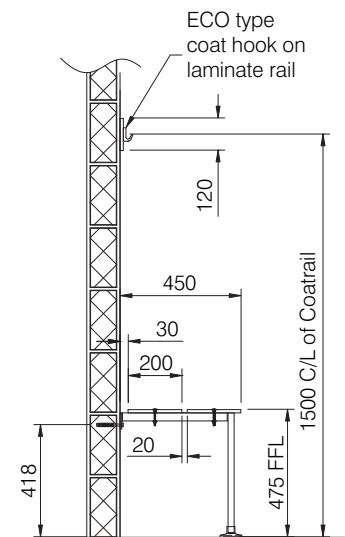
Technical



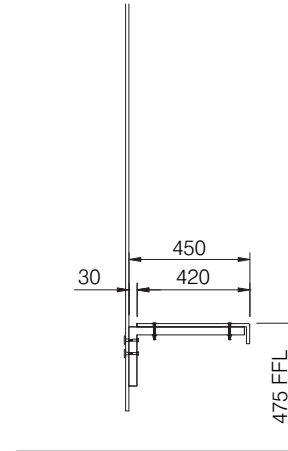
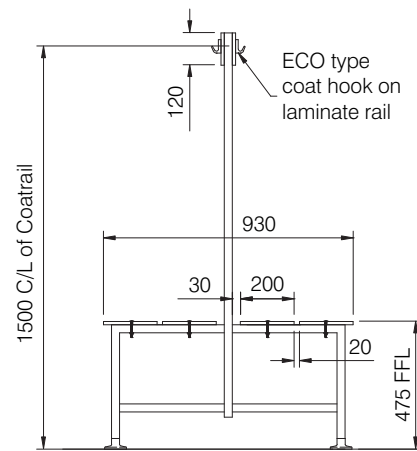
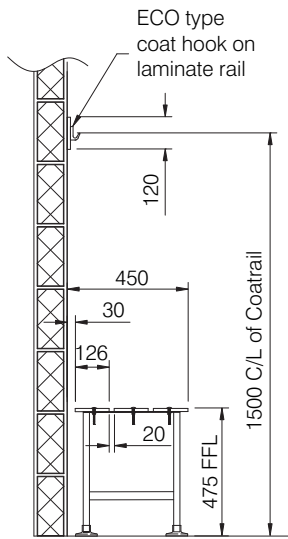
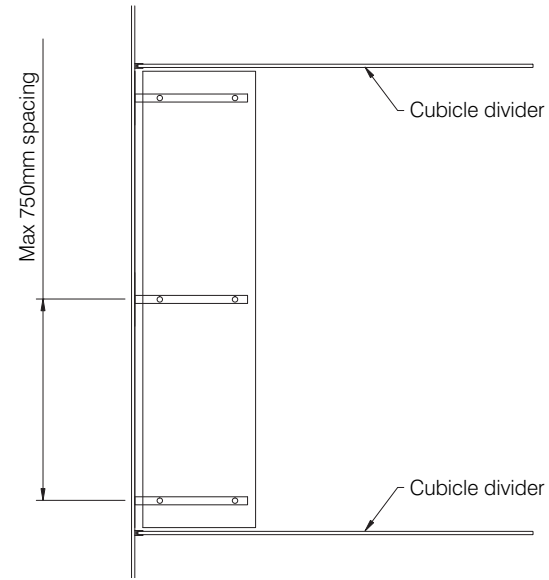
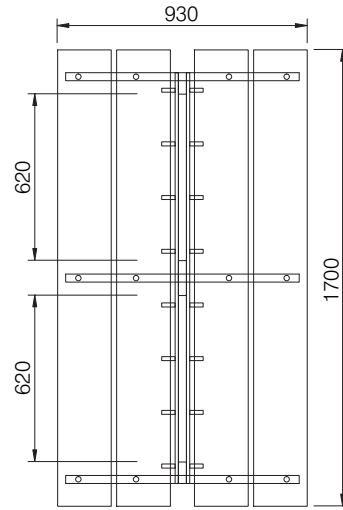
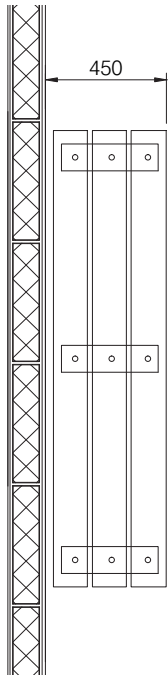
GRP Seating



Section of
Cantilevered Seating



Section of Wall &
Floor Mounted Seating



Section of Floor Mounted Seating

Section of Island Seating

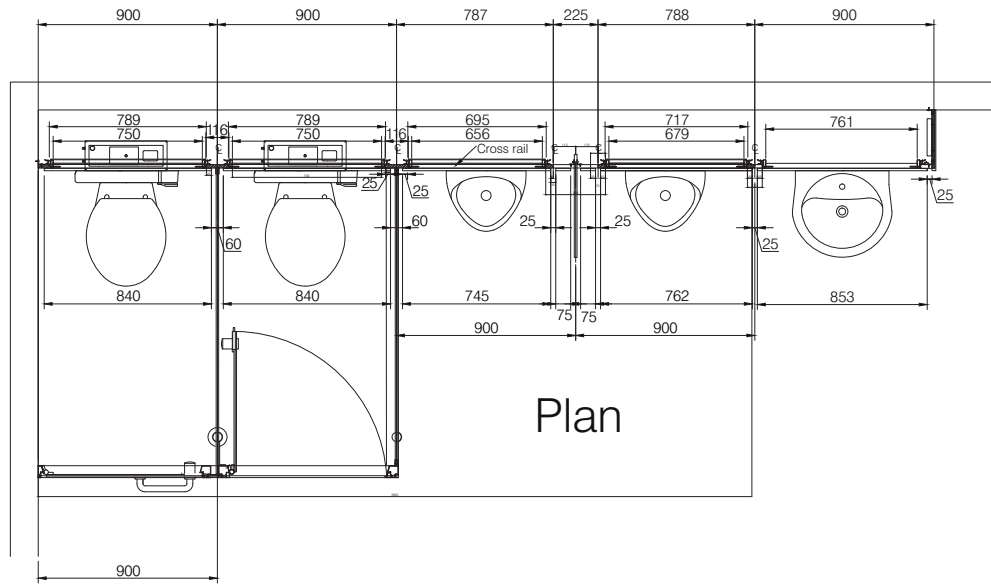
Section of Cubicle Seating

SEATING

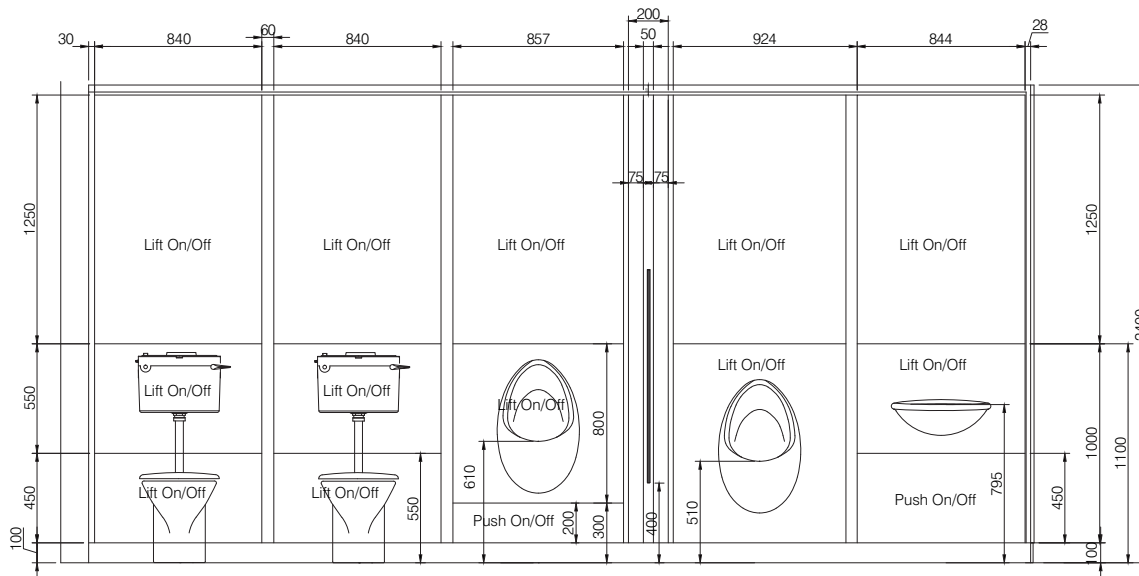
Technical

TROJAN DUCT PANELS

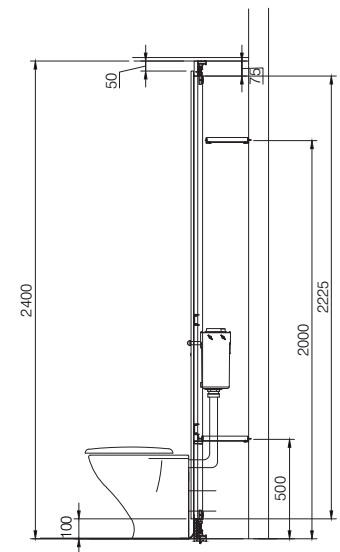
Technical



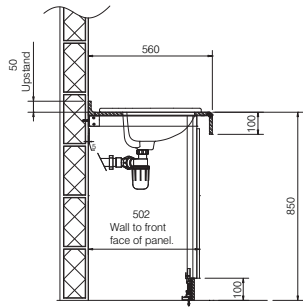
Plan



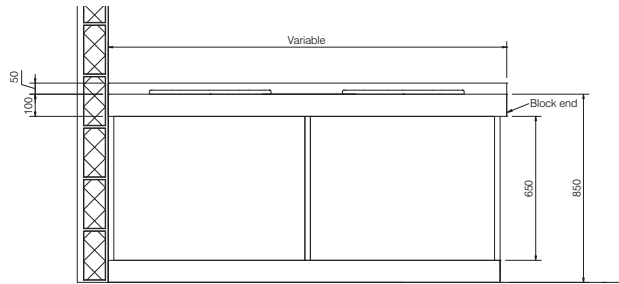
Front Elevation



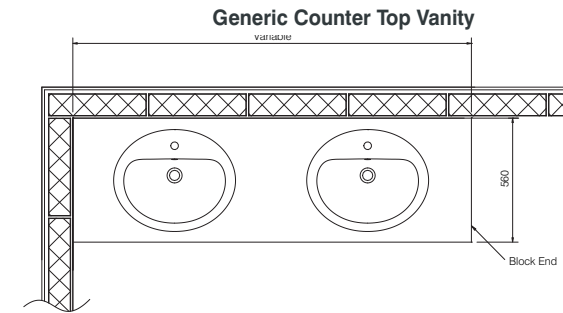
Section Detail



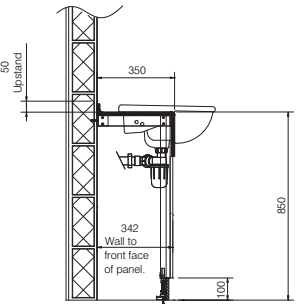
Side Section



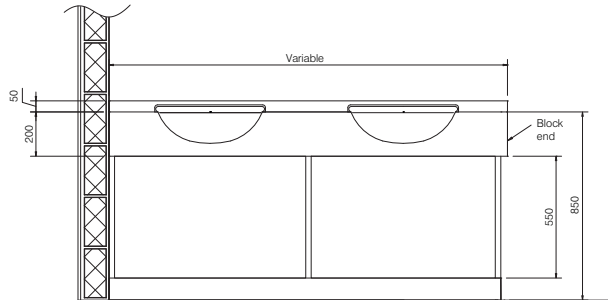
Front Elevation



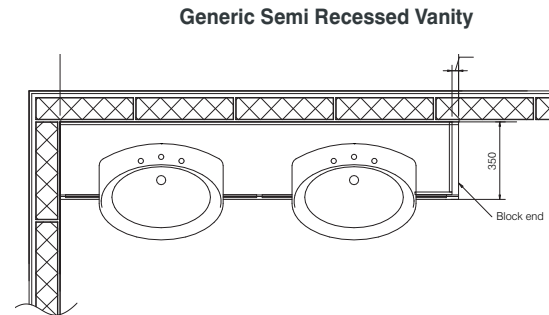
Plan View



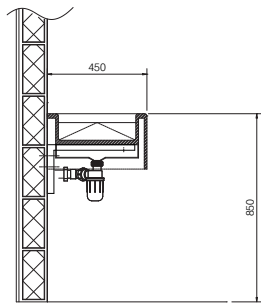
Side Section



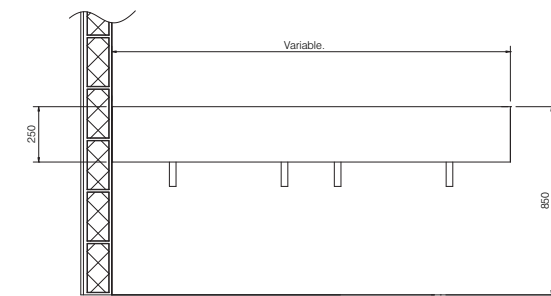
Front Elevation



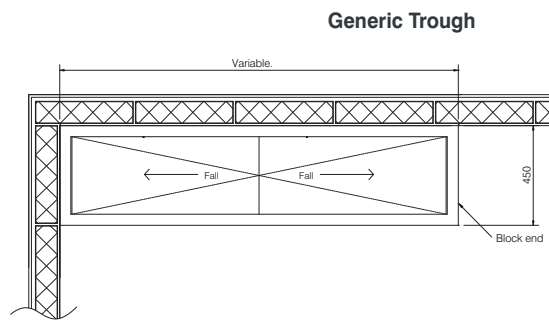
Plan View



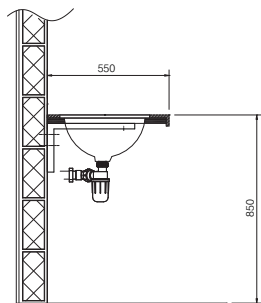
Side Section



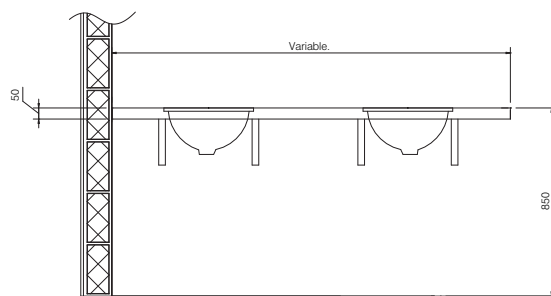
Front Elevation



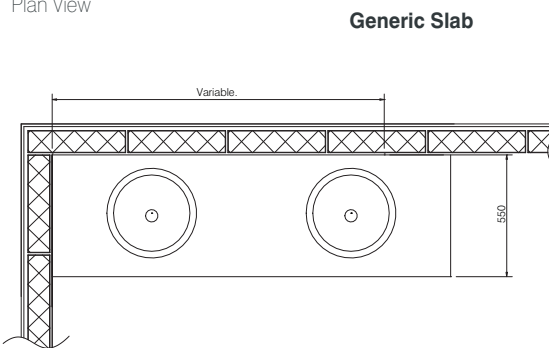
Plan View



Side Section



Front Elevation



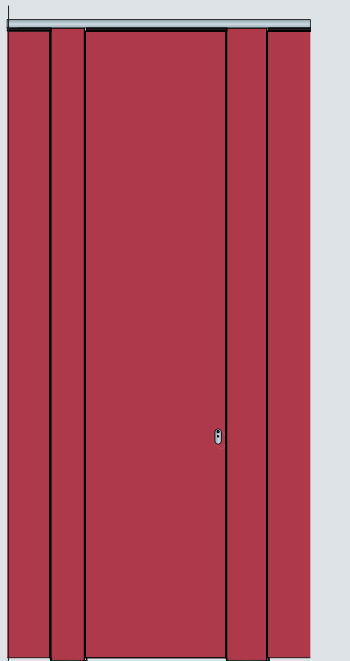
Plan View

TROJAN VANITY UNITS

Technical

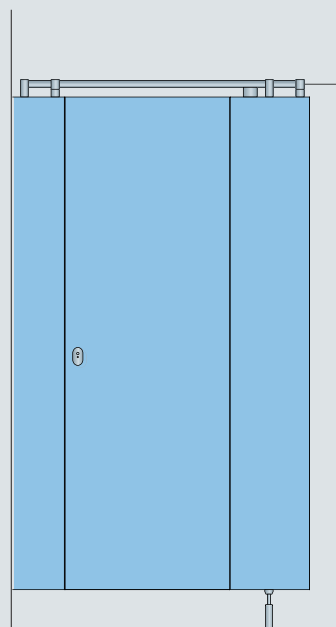
CUBICLE RANGE

Prospec manufacture a range of cubicles that can meet a variety of design concepts and budgets.



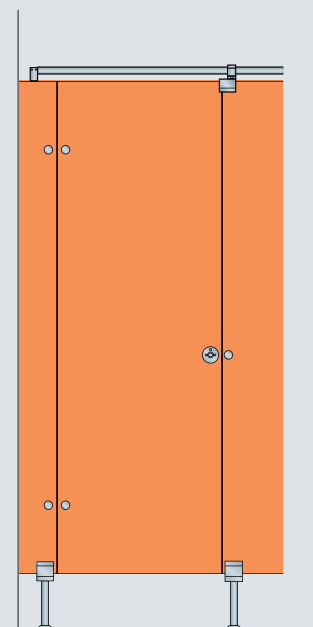
Cloud

Cloud is a highly engineered, full height, flush fronted glass toilet cubicle system that has been developed for the commercial washroom sector.



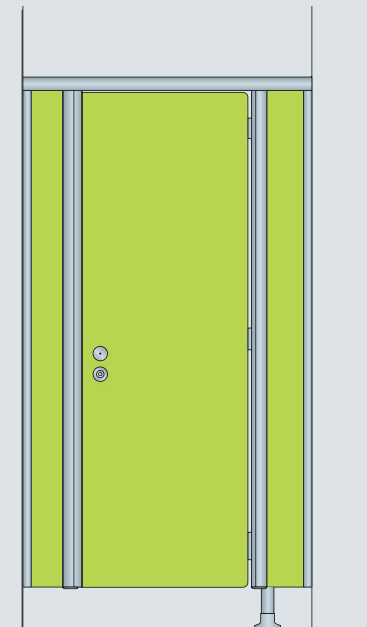
Air

Air is a modern and alternative cubicle option for both shower and toilet cubicles.



Cabrillant

Cabrillant is the original glass panel cubicle system developed in Switzerland over 30 years ago.



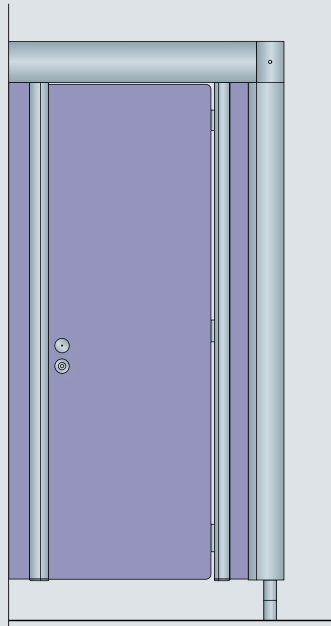
Conform

Conform was developed for the London 2012 Olympic pool and is now an established product.



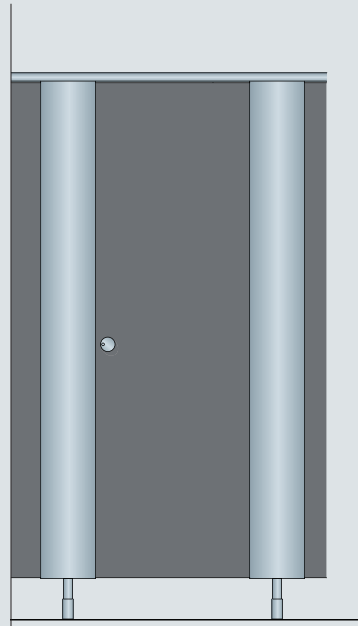
Classic

Classic is our original fully framed cubicle system, which has been developed and improved over many years.



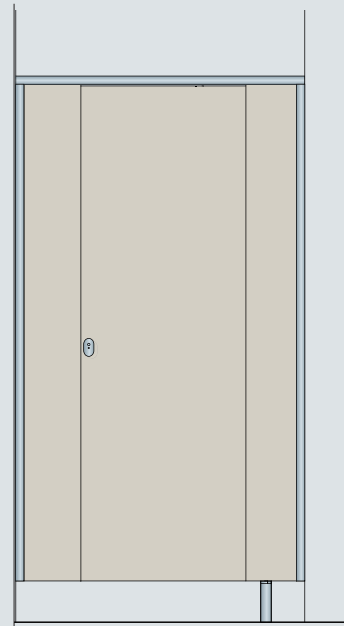
Suspended

Suspended has specially engineered design flexibility that enables it to be installed in almost any project.



System D

System D is a streamlined system with a curved appearance.

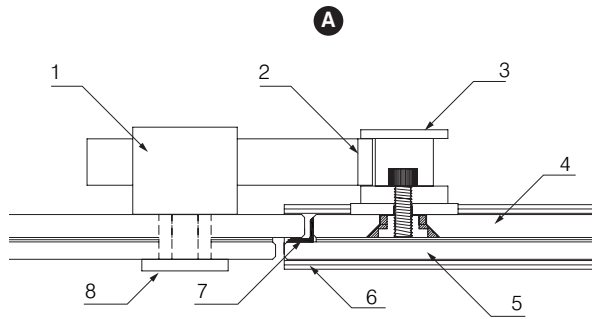


Connect

Connect is an elemental system suitable for toilets and showers within leisure and general commercial applications.

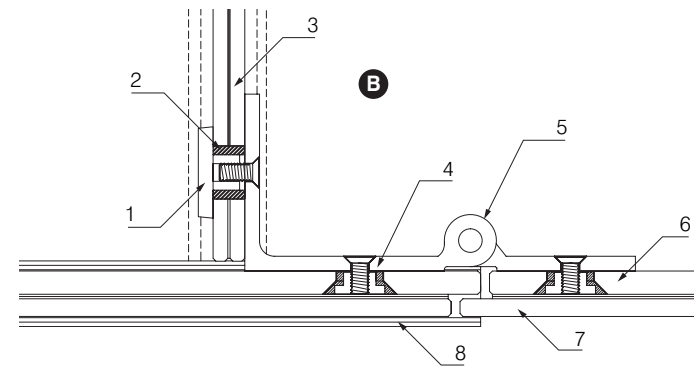
CLOUD

Technical



A Cloud Lock Detail

- 1 - Lock body.
- 2 - Lock finger.
- 3 - Adjustable lock receiver.
- 4 - 8mm T&L, low iron glass.
- 5 - 6mm T&L, low iron glass.
- 6 - Adjustable floor channel.
- 7 - Protective door gasket.
- 8 - Indicator face plate.



B Cloud Hinge Detail

- 1 - Decorative rosette.
- 2 - Adjustable nylon ferrel.
- 3 - 6mm x 6mm T&L, low iron glass.
- 4 - Concealed rosette.
- 5 - Hinge.
- 6 - 8mm T&L, low iron glass.
- 7 - 6mm T&L, low iron glass.
- 8 - Adjustable floor channel.



Door Lock



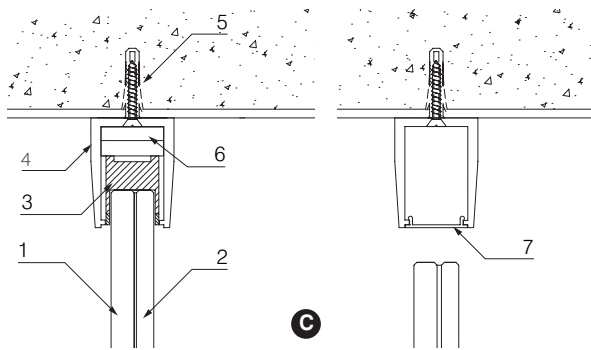
Door Stop



Door Hinge

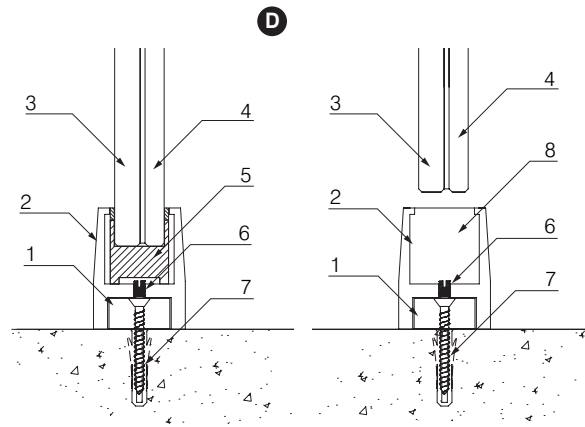


Head Rail



C Cloud Ceiling Detail

- 1 - 8mm T&L, low iron glass.
- 2 - 6mm T&L, low iron glass.
- 3 - PVC gasket.
- 4 - Ceiling channel.
- 5 - Anchor screw/plug (into ceiling).
- 6 - Foam protection tape.
- 7 - Clip in section (between door openings).



D Cloud Floor Detail

- 1 - Base profile.
- 2 - Adjustable floor channel.
- 3 - 8mm T & L, low iron glass.
- 4 - 6mm T & L, low iron glass.
- 5 - Glass protection layer.
- 6 - Adjustable screw.
- 7 - Fix down screw/plug (info floor).
- 8 - Channel endcap.



Floor Channel



Lock Indicator

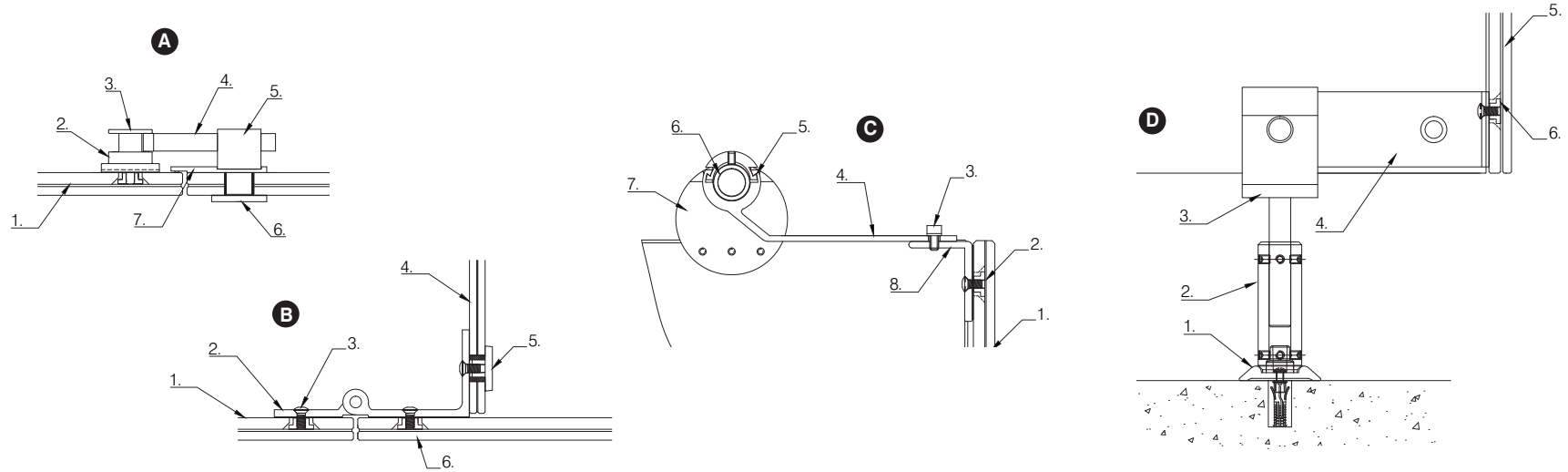


Door Handle

CLOUD
Technical

AIR

Technical



A Air Lock Detail

- 1 - 8 & 6mm T & L, low iron glass.
- 2 - Lock receiver (base).
- 3 - Lock receiver (adjustable).
- 4 - Lock finger.
- 5 - Lock housing
- 6 - Indicator face plate.
- 7 - Door stop plate C/W buffer.

B Air Hinge Detail

- 1 - 8 & 6mm T & L, low iron glass.
- 2 - Hinge.
- 3 - Screw.
- 4 - Divider.
- 5 - Rosette.
- 6 - Concealed rosette.

C Air Head Rail Section Detail

- 1 - 8 & 6mm T & L, low iron glass.
- 2 - Concealed rosette.
- 3 - Socket head screw.
- 4 - Door stop arm.
- 5 - Shock bracket.
- 6 - "Puck" glass bracket.
- 7 - Stabilizing bar
- 8 - Rear panel bracket

D Air Foot Section Detail

- 1 - Ground rosette.
- 2 - Aluminium leg.
- 3 - Clamping bracket.
- 4 - Angle bracket.
- 5 - 8 & 6mm T & L, low iron glass.
- 6 - Concealed rosette.



Door Lock



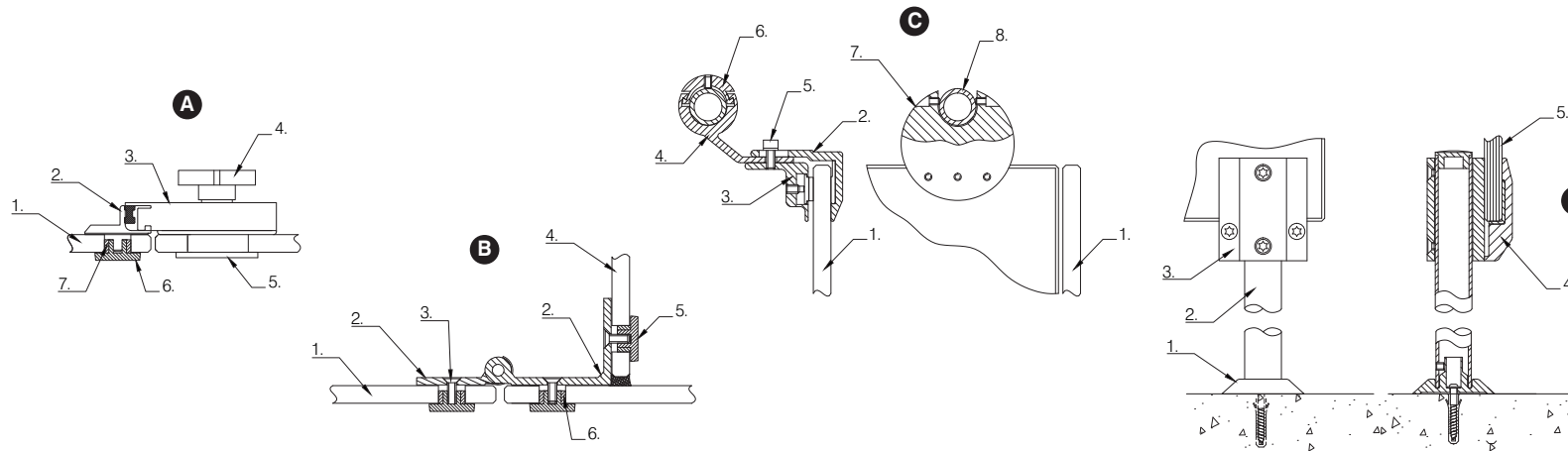
Door Hinge



Head Rail



Foot



A Cabrillant 600 Lock Detail

- 1 - Pilaster - variable glass.
- 2 - Receiver.
- 3 - Latch lock (variable handling).
- 4 - Lock knob.
- 5 - Indicator face plate.
- 6 - Adjustable eccentric nylon ferrule.
- 7 - Concealed rosette.

B Cabrillant 600 Hinge Detail

- 1 - Pilaster - variable glass.
- 2 - Hinge.
- 3 - Screw.
- 4 - Divider.
- 5 - Rosette.
- 6 - Adjustable eccentric nylon ferrule.

C Cabrillant Head Rail Section Detail

- 1 - Pilaster - variable glass.
- 2 - Door stop front clamp.
- 3 - Door stop rear clamp.
- 4 - Shock bracket.
- 5 - Socket head screw.
- 6 - Stabilizing bar top clamp.
- 7 - 'Puck' glass bracket.
- 8 - Stabilizing bar.

D Cabrillant 600 Foot Section Detail

- 1 - Ground rosette.
- 2 - External aluminium leg (female).
- 3 - Clamping bracket (rear).
- 4 - Clamping bracket (front).
- 5 - Pilaster - variable glass.



Door Lock



Door Hinge



Head Rail



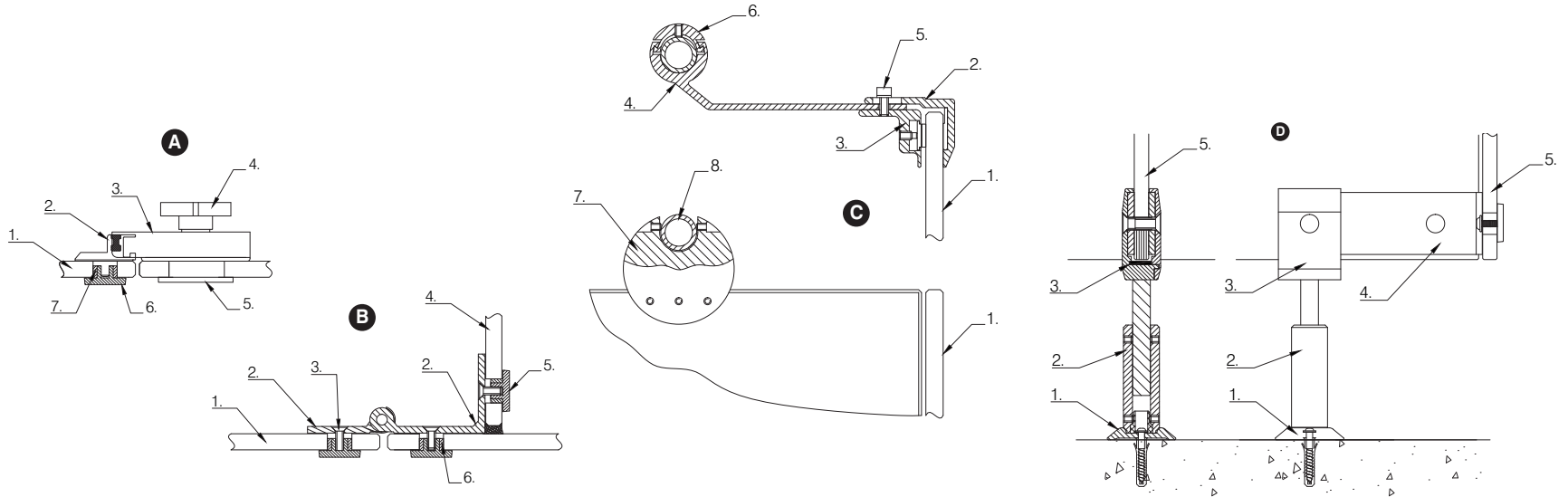
Foot

CABRILLANT 600

Technical

CABRILLANT 700

Technical



A Cabrillant 700 Lock Detail

- 1 - Pilaster - variable glass.
- 2 - Receiver.
- 3 - Latch lock (variable handling).
- 4 - Lock knob.
- 5 - Indicator face plate.
- 6 - Adjustable eccentric nylon ferrule.
- 7 - Concealed rosette.

B Cabrillant 700 Hinge Detail

- 1 - Pilaster - variable glass.
- 2 - Hinge.
- 3 - Screw.
- 4 - Divider.
- 5 - Rosette.
- 6 - Adjustable eccentric nylon ferrule.

C Cabrillant 700 Head Rail Section Detail

- 1 - Pilaster - variable glass.
- 2 - Door stop front clamp.
- 3 - Door stop rear clamp.
- 4 - Shock bracket.
- 5 - Socket head screw.
- 6 - Stabilizing bar top clamp.
- 7 - 'Puck' glass bracket.
- 8 - Stabilizing bar.

D Cabrillant 700 Foot Section Detail

- 1 - Ground rosette.
- 2 - Aluminium leg.
- 3 - Clamping bracket (divider).
- 4 - Angle bracket.
- 5 - Pilaster - variable glass.



Door Lock



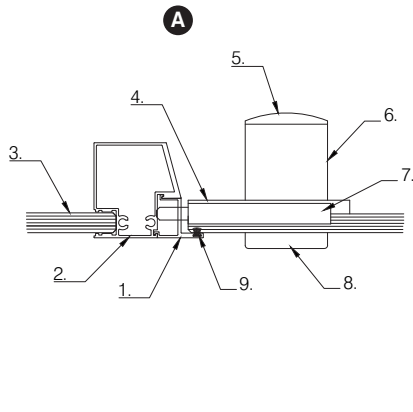
Door Hinge



Head Rail

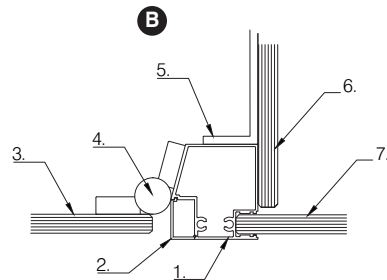


Foot



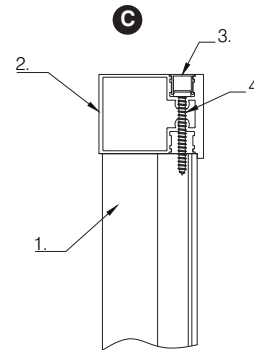
A Conform Lock Detail

- 1 - Emergency breakout strip.
- 2 - Aluminium profile.
- 3 - Compact grade laminate pilaster.
- 4 - Aluminium latch plate.
- 5 - Door buffer.
- 6 - Nylon door handle.
- 7 - Internal nylon latch.
- 8 - Nylon indicator plate.
- 9 - Polybond damping strip.



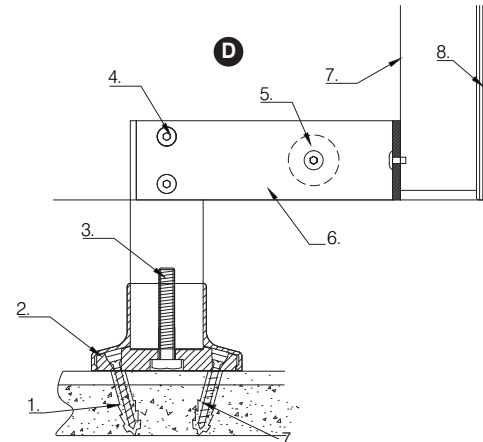
B Conform Hinge Detail

- 1 - Aluminium profile.
- 2 - Aluminium clip-in section.
- 3 - Compact grade laminate door.
- 4 - Nylon hinge.
- 5 - Aluminium leg support.
- 6 - Compact grade laminate divider panel.
- 7 - Compact grade laminate fascia.



C Conform Head Rail Section Detail

- 1 - Aluminium vertical profile.
- 2 - Aluminium head section.
- 3 - Aluminium head clip-in profile.
- 4 - Fixing screw.



D Conform Foot Section Detail

- 1 - Floor fixing.
- 2 - Foot.
- 3 - Foot bolt.
- 4 - Angle bracket fixings.
- 5 - Rosette.
- 6 - Aluminium leg support.
- 7 - Aluminium profile.
- 8 - Compact grade laminate.



Door Lock



Door Hinge



Head Rail



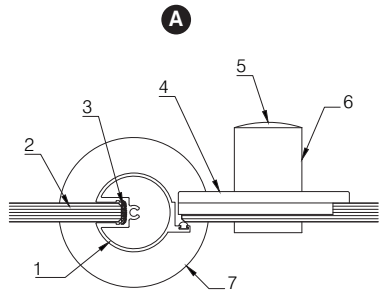
Foot

CONFORM

Technical

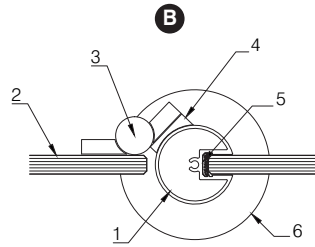
CLASSIC

Technical



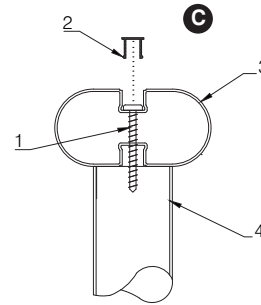
A Classic Lock Detail

- 1 - Aluminium profile.
- 2 - Compact grade laminate.
- 3 - Silicone.
- 4 - Aluminium latch plate.
- 5 - Buffer (door knob).
- 6 - Nylon door knob.
- 7 - Nylon foot shroud.



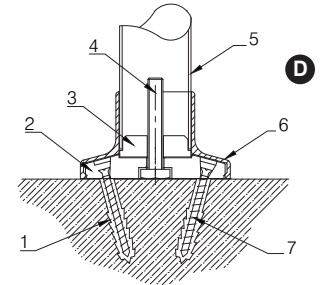
B Classic Hinge Detail

- 1 - Aluminium profile.
- 2 - Compact grade laminate.
- 3 - Hinge.
- 4 - Nylon hinge packer.
- 5 - Silicone.
- 6 - Nylon foot shroud.



C Classic Head Rail Section Detail

- 1 - Screw.
- 2 - Aluminium clip-in profile.
- 3 - Aluminium head section.
- 4 - Aluminium profile.



D Classic Foot Section Detail

- 1 - Plastic plug.
- 2 - Inner (2 part assembly).
- 3 - Nylon insert.
- 4 - Adjustment bolt.
- 5 - Aluminium inner profile.
- 6 - Shroud.
- 7 - Screw



Door Lock



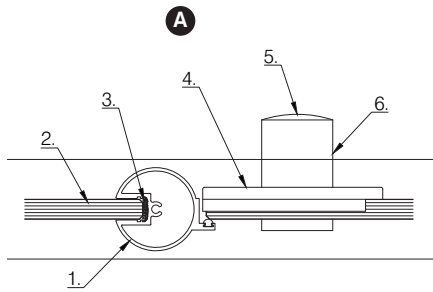
Door Hinge



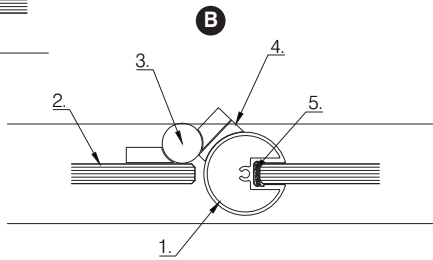
Head Rail



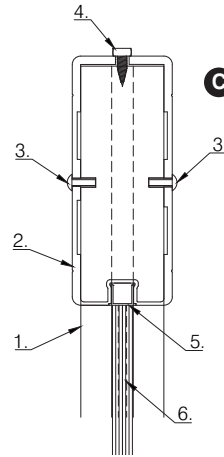
Foot



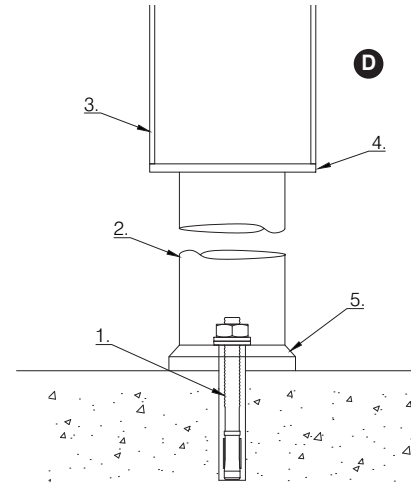
A Suspended Lock Detail
 1 - Aluminium profile.
 2 - Compact grade laminate.
 3 - Silicone.
 4 - Aluminium latch plate.
 5 - Buffer (door knob).
 6 - Nylon door knob.



B Suspended Hinge Detail
 1 - Aluminium profile.
 2 - Compact grade laminate.
 3 - Hinge.
 4 - Nylon hinge packer
 5 - Silicone.



C Suspended Beam Section Detail
 1 - Aluminium profile.
 2 - Aluminium beam.
 3 - Rivet.
 4 - Bolt.
 5 - Clip-in section
 6 - Compact grade laminate



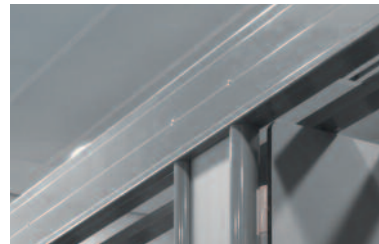
D Suspended Foot Section Detail
 1 - Floor bolt.
 2 - Aluminium leg.
 3 - Aluminium post.
 4 - Bottom end cap.
 5 - Aluminium foot.



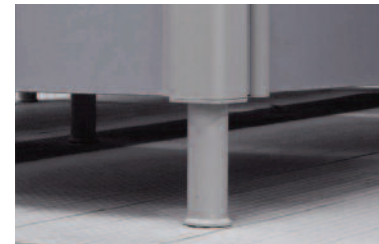
Door Lock



Door Hinge



Head Rail



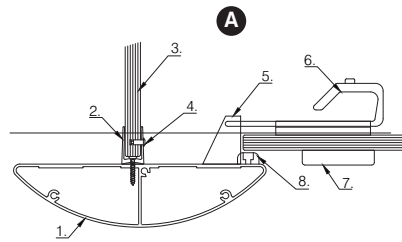
Foot

SUSPENDED

Technical

SYSTEM D

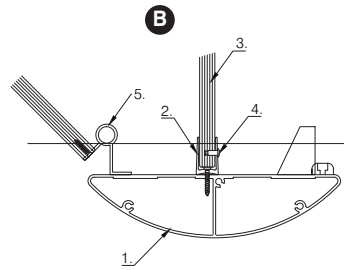
Technical



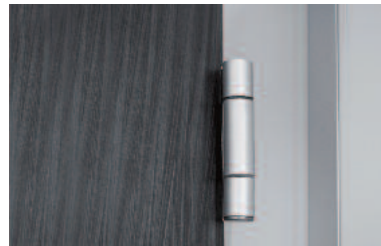
- A System D Lock Detail**
- 1 - Aluminium profile.
 - 2 - Aluminium 'U' channel.
 - 3 - Compact grade laminate.
 - 4 - Rivet.
 - 5 - Receiver.
 - 6 - Sliding latch.
 - 7 - Indicator plate.
 - 8 - Door buffer.



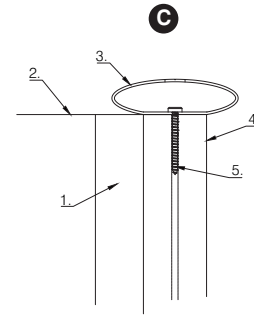
Door Lock



- B System D Hinge Detail**
- 1 - Aluminium profile.
 - 2 - Aluminium 'U' channel.
 - 3 - Compact grade laminate.
 - 4 - Rivet.
 - 5 - Cranked hinge.



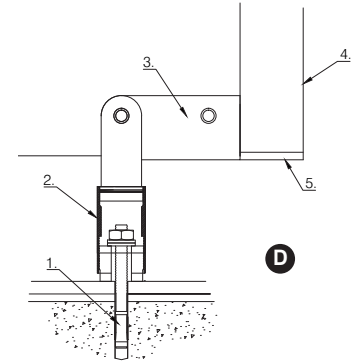
Door Hinge



- C System D Head Rail Section Detail**
- 1 - Aluminium 'U' channel.
 - 2 - Divider panel.
 - 3 - Headrail.
 - 4 - Aluminium profile.
 - 5 - Fixing screw.



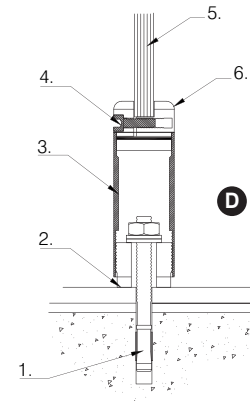
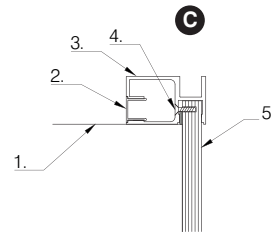
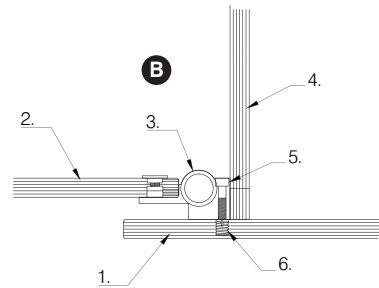
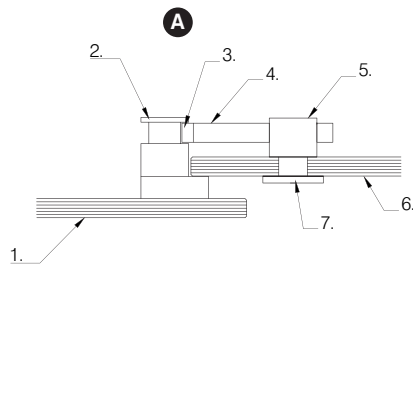
Head Rail



- D System D Foot Section Detail**
- 1 - Floor bolt.
 - 2 - Leg.
 - 3 - Return leg angle bracket.
 - 4 - Aluminium profile.
 - 5 - End cap.



Foot



A Connect Lock Detail

- 1 - Compact grade laminate fascia
- 2 - Aluminium receiver
- 3 - Nylon tip.
- 4 - Aluminium finger.
- 5 - Aluminium lock body.
- 6 - Compact grade laminate door.
- 7 - Aluminium indicator plate.

B Connect Hinge Detail

- 1 - Compact grade laminate fascia.
- 2 - Compact grade laminate door.
- 3 - Aluminium hinge.
- 4 - Compact grade laminate divider panel.
- 5 - Cap head set screw.
- 6 - Brass insert.

C Connect Head Rail Section Detail

- 1 - Divider panel.
- 2 - Aluminium clip-in profile.
- 3 - Connect aluminium head section.
- 4 - Screw.
- 5 - Compact grade laminate fascia.

D Connect Foot Section Detail

- 1 - Fixing bolt.
- 2 - Nylon base.
- 3 - Aluminium foot section.
- 4 - Cap head socket screw.
- 5 - Compact grade laminate divider.
- 6 - Aluminium foot clamp.



Door Lock



Door Hinge



Head Rail



Foot

CONNECT
Technical

SPECIFICATION





Lockers – Wet Use

Material: 0.9mm aluminium sheet bodies with rolled radius rear internal corners.

Door Frames: Extruded aluminium profiles. Hinges from aluminium and 316 grade stainless steel with spring loading for automatic door closing.

Base, Top and Shelf Units: High impact ABS injection moulding. Aluminium shelves to Z-lockers.

Doors & End Panels: 10.76mm (2 x 5mm leaves of glass) toughened and laminated glass with a 0.76mm EVA interlayer **or** 10mm toughened float glass **or** 10/12mm compact grade laminate. Opti-White glass as option.

Edge Treatment: Glass: All edges polished, exposed corners with small radius. Laminate: Bull-nosed with radius corners.

Standard Sizes:

Depth: 500mm
 Height: 900mm / 1500mm / 1800mm / 2000mm
 (Add 30mm for built in base plinth)
 Width: 300mm / 400mm
 Non-standard sizes available on request.

Fittings: Coat hooks in all compartments of 900mm or more high.



Lockers – Dry Use

Material: 15mm melamine faced high density particle board bodies with screw and dowel construction.

Door Frames: Extruded aluminium profiles. Hinges from aluminium and 316 grade stainless steel with spring loading for automatic door closing.

Base, Top and Shelf Units: 15mm melamine faced high density particle board with screw and dowel construction.

Doors & End Panels: 10.76mm (2 x 5mm leaves of glass) toughened and laminated glass with a 0.76mm EVA interlayer **or** 10mm toughened float glass **or** 10/12mm compact grade laminate. Opti-White glass as option.

Edge Treatment: Glass: All edges polished, exposed corners with small radius. Laminate: Bull-nosed with radius corners.

Standard Sizes:

Depth: 500mm
 Height: 900mm / 1500mm / 1800mm / 2000mm
 (Add 30mm for built in base plinth)
 Width: 300mm / 400mm / 450mm
 Non-standard sizes available on request.

Fittings: Coat hooks in all compartments of 900mm or more high.



Options

Finish/Colour: Glass: 16 Standard RAL colours. Non-standard colours available on request. Compact Grade Laminate: Select from manufacturer's range availability.

Tierage: 1, 2, 3, 4, 5, 6 tier & Z-lockers.

Support Plinth Options: Aluminium angle bracket; aluminium tubular frame; softwood timber frame; locker support bracket with integral seating; concrete (by others).

Lock Options: Prospec removable cylinder coin lock; Prospec removable cylinder single coin collect lock; Prospec removable cylinder dual coin collect lock; Prospec Kaba removable cylinder coin lock; Prospec Kaba removable cylinder coin collect lock; aluminium hasp and clasp, hasp/cam lock; wet area cam lock, dry area Camlock; Prospec mechanical code lock; Prospec OCS; Prospec OTS; Prospec OTS advanced.

Keystrops: Moulded from flexible PVC or numbered discs with safety pin.

Additional Options: DDA compliant number plates; engraved numerals on laminate doors; compact grade laminate fascia; integral or freestanding seating; sloping tops; integral aluminium shoe compartment; chrome hanging rail in compartments of 900mm or higher.



Cloud

Overall Cubicle Height: Up to a height of 2500mm

Frame & Finish: Aluminium extrusions satin silver anodised to 25 microns.

Fittings: Satin anodised aluminium horizontal and vertical profiles, including channels, head rails and clip in sections; division panels are attached through hinge/bracket using aluminium fittings with eccentric adjustment feature.

Door Fittings: Satin anodised aluminium hinge/brackets mechanically fixed into concealed rosettes; engineered satin anodised lock, fixed though door with concealed fixings with outside indicator and emergency release function; satin anodised aluminium coat hooks with integral rubber buffer.

Pilasters, Doors & End Panels: 15.52mm (1 x 8mm & 1 x 6mm leaf) toughened & laminated opti-white glass, with a 1.52mm EVA interlayer **or** 16mm compact grade laminate. Glass has an offset rebate, creating a consistent appearance on each side, thus eliminating any sightline into the cubicle.

Partition Panels: 12.76mm (2 x 6mm leaves of glass) toughened and laminated glass opti-white glass with a 0.76mm EVA interlayer **or** 12mm compact grade laminate.

Edge Treatment: All edges polished, exposed corners with small radius.

Colour/Finish: Glass: Ceramic paint solid colour or etch effect from a choice of 16 standard colours. Non-standard colours available on request.

Accessories: Outward opening doors fitted with matching satin anodised pull handle, fixed through door using matching fittings.



Air

Overall Cubicle Height: 2000mm including floor clearance of 150mm as standard, option of 200mm to shower cubicles.

Frame & Finish: Aluminium extrusions satin silver anodised to 25 microns.

Fittings: Satin anodised aluminium overhead stabilising head rail bar set back 200mm; satin anodised aluminium cubicle support frame, brackets and fittings; 1no support leg attached to partition panel set back 150mm from front face, concealed rosettes with mechanical connection to front pilaster and adjustable ground clearance.

Door Fittings: Satin anodised aluminium spring loaded hinges for automatic opening or closing function; door latch with outside indicator **or** internal aluminium doorknob; DDA compliant door latch with matching grab handles.

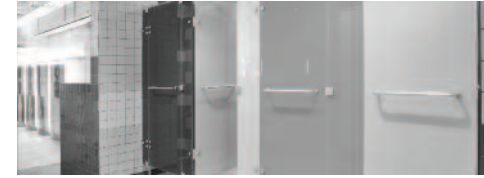
Pilasters, Doors & End Panels: 15.52mm (1 x 8mm & 1 x 6mm leaf) toughened & laminated opti-white glass, with a 1.52mm EVA interlayer **or** 16mm compact grade laminate.

Partition Panels: 10.76mm (2 x 5mm leaves of glass) toughened and laminated glass with a 0.76mm EVA interlayer **or** 10mm toughened float glass **or** 12mm compact grade laminate. Opti-White glass as option.

Edge Treatment: Glass: All edges polished, exposed corners with small radius. Laminate: Square edged and polished.

Colour/Finish: Glass: Ceramic paint solid colour or etch effect from a choice of 16 standard colours. Non-standard colours available on request. Compact grade laminate: Select from manufacturer's range availability.

Accessories: External towel rail with internal doorknob; coat hooks; rebate detail on toilet and changing cubicles; quadrant shower shelves; door holder for outward opening doors; door closers.



Cabrillant 600

Overall Cubicle Height: 2000mm including floor clearance of 150mm as standard, option of 200mm to shower cubicles.

Frame & Finish: Aluminium extrusions satin silver anodised to 25 microns.

Fittings: Satin anodised aluminium overhead stabilising headrail bar set back 80mm from front face; satin anodised aluminium cubicle support frame brackets and fittings; 2no support legs attached to front pilaster with satin anodised aluminium and stainless steel clamp fixings with adjustable ground clearance.

Door Fittings: Satin anodised aluminium spring loaded hinges for automatic opening or closing function; door latch with outside indicator **or** internal aluminium doorknob; DDA compliant door latch with matching grab handles.

Pilasters, Doors & End Panels: 10.76mm (2 x 5mm leaves of glass) toughened and laminated glass with a 0.76mm EVA interlayer **or** 10mm toughened float glass **or** 12mm compact grade laminate. Opti-White glass as option.

Partition Panels: 10.76mm (2 x 5mm leaves of glass) toughened and laminated glass with a 0.76mm EVA interlayer **or** 10mm Toughened float glass **or** 12mm compact grade laminate. Opti-White glass as option.

Edge Treatment: Glass: All edges polished, exposed corners with small radius. Laminate: Bull-nosed with radius corners.

Colour/Finish: Glass: Ceramic paint solid colour or etch effect. Choice of 16 standard colours. Non-standard colours available on request. Laminate: Select from manufacturer's range availability.

Accessories: External towel rail; coat hooks; hinge and lock blinds on toilet and changing cubicles; all finished in satin anodised aluminium; glass quadrant shower shelves; door holder for outward opening doors; door closers.

SPECIFICATION



Cabrillant 700

Overall Cubicle Height: 2000mm including floor clearance of 150mm as standard, option of 200mm to shower cubicles.

Frame & Finish: Aluminium extrusions satin silver anodised to 25 microns.

Fittings: Satin anodised aluminium overhead stabilising head rail bar set back 200mm; satin anodised aluminium cubicle support frame, brackets and fittings; 1no support leg attached to partition panel set back 150mm from front face, satin anodised aluminium through fixings with mechanical connection to front pilaster and adjustable ground clearance.

Door Fittings: Satin anodised aluminium spring loaded hinges for automatic opening or closing function; door latch with outside indicator **or** internal aluminium doorknob; DDA compliant door latch with matching grab handles.

Pilasters, Doors & End Panels: 10.76mm (2 x 5mm leaves of glass) toughened and laminated glass with a 0.76mm EVA interlayer **or** 10mm toughened float glass **or** 12mm compact grade laminate. Opti-White glass as option.

Partition Panels: 10.76mm (2 x 5mm leaves of glass) toughened and laminated glass with a 0.76mm EVA interlayer **or** 10mm toughened float glass **or** 12mm compact grade laminate. Opti-White glass as option.

Edge Treatment: Glass: All edges polished, exposed corners with small radius. Laminate: Bull-nosed with radius corners.

Colour/Finish: Glass: Ceramic paint solid colour or etch effect from a choice of 16 standard colours. Non-standard colours available on request. Compact grade laminate: Select from manufacturer's range availability.

Accessories: External towel rail; coat hooks and hinge and lock blinds on toilet and changing cubicles; all from satin anodised aluminium; quadrant shower shelves; door holder for outward opening doors; door closers.



Conform

Overall Cubicle Height: 2006mm including floor clearance of 150mm.

Frame & Finish: Aluminium extrusions satin silver anodised to 25 microns.

Fittings: Extruded satin anodised aluminium headrail and profiles; adjustable anodised aluminium support legs / floor attachments with fully concealed stainless steel fixings and nylon foot cover, set back 200mm from the front face on the division panels.

Door Fittings: 3N^o solid colour nylon covered heavy-duty stainless steel / brass hinges per door; concealed nylon door latch; standard handle assembly; emergency breakout strip; DDA compliant handle set with lever action turn and horizontal grab handles; 1 coat hook per cubicle and 2 coat hooks to DDA compliant cubicles.

Pilasters, Doors & End Panels: 12mm compact grade laminate.

Partition Panels: 12mm compact grade laminate.

Edge Treatment: Bull-nosed with radiused corners.

Colour/Finish: Select from manufacturer's range availability.

Accessories: Option of anodised aluminium door furniture; anti-peep rails; anti-camera skirting; door holder for outward opening doors; door closers.

Also available in suspended version with load bearing head beam designed for high-use.



Classic

Overall Cubicle Height: 2006mm including floor clearance of 150mm.

Frame & Finish: Aluminium extrusions satin silver anodised to 25 microns **or** polyester powder coated.

Fittings: Extruded aluminium headrail and profiles; adjustable anodised or powder coated aluminium support legs / floor attachments with fully concealed stainless steel fixings and nylon foot cover.

Door Fittings: 3N^o solid colour nylon covered heavy-duty stainless steel / brass hinges per door; concealed nylon door latch with indicator and emergency release; standard handle assembly; DDA compliant handle set with lever action turn and horizontal grab handles; 1 coat hook per cubicle and 2 coat hooks to DDA compliant cubicles.

Pilasters, Doors & End Panels: 12mm compact grade laminate.

Partition Panels: 12mm compact grade laminate.

Edge Treatment: Bull-nosed with radiused corners.

Colour/Finish: Select from manufacturer's range availability.

Accessories: Anti-peep rails; anti-camera skirting; door holder for outward opening doors; door closers.

Also available in suspended version with load bearing head beam designed for high-use.



Suspended

Overall Cubicle Height: 2083mm including floor clearance of 150mm.

Frame & Finish: Aluminium extrusions satin silver anodised to 25 microns **or** polyester powder coated.

Fittings: Extruded aluminium load bearing head beam and profiles.

Door Fittings: 3N^o solid colour nylon covered heavy-duty stainless steel / brass hinges per door; concealed nylon door latch with indicator and emergency release; standard handle assembly; DDA compliant handle set with lever action turn and horizontal grab handles; 1 coat hook per cubicle and 2 coat hooks to DDA compliant cubicles.

Pilasters, Doors & End Panels: 12mm compact grade laminate.

Partition Panels: 12mm compact grade laminate.

Edge Treatment: Bull-nosed with radiused corners.

Colour/Finish: Select from manufacturer's range availability.

Accessories: Anti-peep rails; anti-camera skirting; door holder for outward opening doors; door closers.



System D

Overall Cubicle Height: 1981mm including floor clearance of 150mm.

Frame & Finish: Aluminium extrusions satin silver anodised to 25 microns.

Fittings: Satin anodised extruded aluminium elliptical headrail and pilasters, brackets and fittings; adjustable support leg with fully concealed 316 grade stainless steel fixings and adjuster bolt, set back 150mm from the pilaster.

Door Fittings: 3N^o satin anodised hinges per door, 1 sprung **or** pair of spring loaded hinges on glass doors; sliding latch with indicator and emergency release; DDA compliant door latch with matching grab handles; 1 coat hook per cubicle fixed to doorframe **or** 2 coat hooks to DDA compliant cubicles.

Doors & End Panels: 10.76mm (2 x 5mm leaves of glass) toughened and laminated glass with a 0.76mm EVA interlayer **or** 10mm toughened float glass **or** 12mm compact grade laminate. Opti-White glass as option.

Partition Panels: 10.76mm (2 x 5mm leaves of glass) toughened and laminated glass with a 0.76mm EVA interlayer **or** 10mm toughened float glass **or** 12mm compact grade laminate. Opti-White glass as option.

Edge Treatment: Glass: All edges polished, exposed corners with small radius. Laminate: Bull-nosed with radiused corners.

Colour/Finish: Glass: Ceramic paint solid colour **or** etch effect from a choice of 16 standard colours. Non-standard colours available on request. Compact grade Laminate: Select from manufacturer's range availability.

Accessories: Anti-peep rails; anti-camera skirting; door holder for outward opening doors; door closers.



Connect

Overall Cubicle Height: 2006mm including floor clearance of 150mm.

Frame & Finish: Aluminium extrusions satin silver anodised to 25 microns.

Fittings: Continuous extruded aluminium headrail; extruded aluminium wall channel to rear of each division panel; adjustable pedestal legs with nylon base.

Door Fittings: 2N^o spring loaded, soft closing hinges; satin anodised aluminium door latch with indicator and emergency release to the exterior; rubber buffer sited within the lock receiver; 1 coat hook per cubicle and 2 coat hooks to DDA compliant cubicles.

Pilasters, Doors & End Panels: 12mm compact grade laminate.

Partition Panels: 12mm compact grade laminate.

Edge Treatment: Bull-nosed with radiused corners.

Colour/Finish: Select from manufacturer's range availability.

Accessories: Door holder for outward opening doors.

Also available in full Height Version up to 2500mm high, including floor clearance from 15mm to 150mm.

SPECIFICATION



Trojan Vanity Unit & Vanity/Grooming Shelf

Vanity Unit Type 1 – a half size vanity unit with cut out for protruding basin.

Vanity Unit Type 2 – a full-size vanity unit with cut out for basin and lower access panel.

Vanity/Grooming Shelf - postformed countertop. Framing: Fully extruded aluminium framework sections, connected using horizontal cross sections and 'z' sections, fixed via screwport connections.

Material: 10mm/12mm compact grade laminate with resin formed corners and post formed HPL bonded to surface **or** solid surfacing minimum thickness 10mm bonded to moisture resistant 25mm MDF substrate **or** high pressure laminate bonded to moisture resistant MDF or WPB plywood, minimum thickness 18mm.

Colour/Texture: Select from manufacturer's range availability.

Accessories: End panels; chrome ferrules, mirrors, pelmets.



Trojan Access Panel System

Frame: Prefabricated extruded aluminium frame.

Panel Height: Standard 3 number panels in full height system up to 2400mm high.

Panel Type: 12mm compact grade laminate **or** 10mm toughened glass.

Method of Fixing Panels: Panels fixed to frame using plastic keku clip, located and screwed to prefabricated aluminium frame. Between 4 to 6 number per panel, with concealed fixings using stainless steel screws.

Joint Treatment: Vertical and horizontal shadow bands formed from HPL bonded to 18mm WPB plywood.

Included Features: Part-height cistern covers with matching tops.

Finish / Colour: Glass: Choice of 16 standard colours. Non-standard colours available on request. Compact Grade Laminate: Select from manufacturer's range availability.

Available in heights up to 4000mm consult with Prospec Ltd for recommendations and details.



Bench Seating

Brackets Available: Wall to floor; floor mounted; Cantilever, wall construction must be 7N/ mm²; island frames; back to back island.

Support Brackets and Frames: Mild steel box sections, welded construction, bright zinc plated with polyester powder coating finish.

Fixing to Floor: Adjustable feet to accommodate sloping floors, moulded nylon bases and covers with 316 grade stainless steel adjuster bolt **or** direct to floor with insitu brackets and 316 stainless steel screws. Island frames and floor mounted can be free standing.

Fixing to Walls: 316 stainless steel coach screws and plastic plugs.

Seat Slats: Flat compact grade laminate slats **or** postformed HPL bonded to 12mm compact grade laminate with curved front 50mm radius downstand **or** hardwood timber.

Coat Hook Rails: To match.

Fittings: Nylon moulded coat hooks.

Finish/Colour: Steel brackets and frames: Polyester powder coated from standard RAL charts. Compact grade laminate: Select from manufacturers range availability.



GRP Bench Seating

Base Options: Weighted with a rubber anti-slide base (with the exception of A3 3 metre & G3 3 metre).
Un-weighted with rubber anti-slide base.
Fitted with anchor bolts.

Fixing to Floor:

Weighted: Modules supplied weighted to prevent people from moving installation to another area. Weighted modules are ideal if you would like the flexibility to move seating at a later date and the security that they will be safe.

Un-weighted: This supply option offers the utmost in flexibility and is ideal for domestic use or in areas where you want to move seats quickly and easily, such as events/exhibition spaces.

Fitted with Anchor Bolts: Modules are complete with anchor bolts for permanent fixing - ideal for public open spaces or where security may be an issue.

Construction: Modular.

Material: 100 % GRP Fibreglass.

Colour: Any BS/RAL colour.

SPECIFICATION

SYMBOL OF RECOGNITION



Prospect Limited
Canklow Meadows Estate, West Bawtry Road, Rotherham S60 2XL, England
Tel: +44 (0)1709 377147 Fax: +44 (0)1709 375239

www.prospec.co.uk sales@prospec.co.uk





